

# Frames

From core to top quality



natural materials



fire-resistant



easy to fit



sound  
insulating



load  
bearing



thermally  
insulating



sustainability

# 6



## Faay Vianen B.V.

Faay Vianen B.V. is an independent Dutch family company which was established in 1972. Founder Cees Faay developed our first wall system. That was the basis for all the wall and ceiling systems we have developed since and which lead the way worldwide, thanks to their unique properties.

Our aim is to resolve problems before they begin, by offering you sophisticated prefab products. By sharing practical solutions in tandem with you and by supplying guaranteed quality. As a result of our individual and professional working methods we have built long term relationships with many loyal customers. Once customers have used Faay products, they tend to use no other kind. And we are proud of that!

## Timber frames; delivered ready produced to size

There are good reasons for choosing FAAY partition systems. Chiefly this comes from many years of experience in the production of complete wall systems, which testifies to our flexibility and invention. This completeness is also expressed in the range of wooden door and window frames, which integrate with the FAAY internal partition walling.



*Frames can be integrated into the wall using simple carpentry tools.*

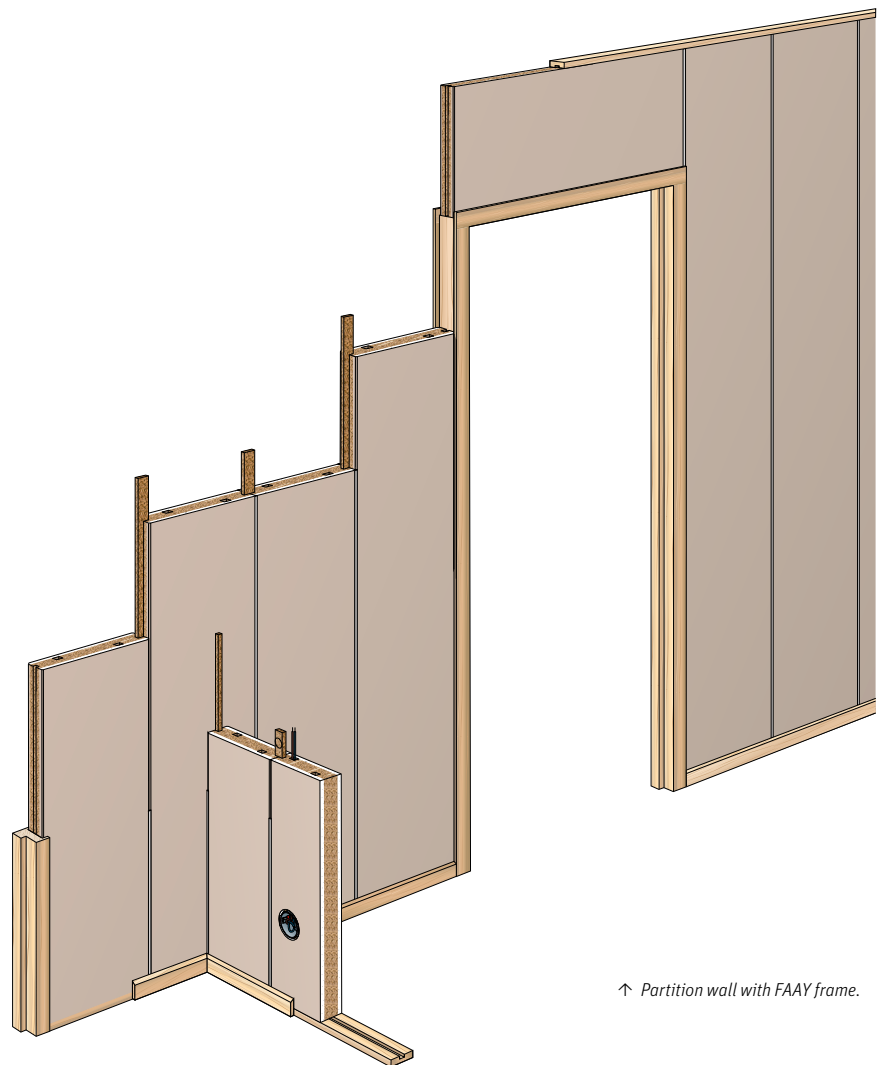
» EVERY DAY WE LIVE UP  
TO OUR MOTTO: 'QUALITY  
ALWAYS WINS'!

## Frame panels

Faay has special partition panels for every type of wall, so that areas above door frames can be infilled into the overall run of wall without special cutting and material waste. The within-frame partition panels have the same composition as regular partition panels and are supplied in a standard height of 60 cm. In the event of taller partition heights, the within-frame panels can be stacked and connected to each other (see detail diag. 6.5.1). The width of the frame panel can be adjusted to suit the door size and type. If panel joints are glued using FAAYFIX®, then the within-frame panel and main wall form a solid mass to prevent frames from detaching as a result of mechanical loading.

Faay timber frames are composed of fault-free, coated and/or laminated wood and are available in frame-mounted and wall-mounted format with robust thicknesses of 56 mm and 65 mm respectively. The width of the frame is adjusted to suit the partition thickness. For partitions thicker than 100 mm, Faay provides separate jamb linings for the frames. (detail diag. 6.3.1).

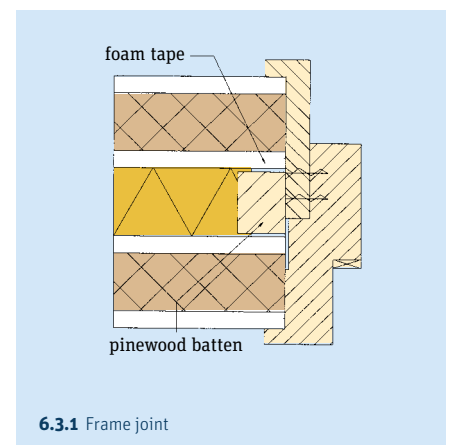
All Faay frames have been pre-treated with a water-based white undercoat (RAL 9001) with a total layer thickness of 30µ. They are therefore supplied ready for final finishing to any colour. It is also possible to have Faay frames pre-painted.



↑ Partition wall with FAAY frame.

## Perfect Connections

A square housed joint ensures that the frame connects perfectly to the wall, without the need to seal the joints! Frames have a fire resistance of 30 minutes. For ease of erection an assembly set is also available as a separate item. Faay frames are based on a standard door height of 2115 mm and 2315 mm. If doors shorter or lower are used, then the stiles at the bottom of the frame can be shortened.

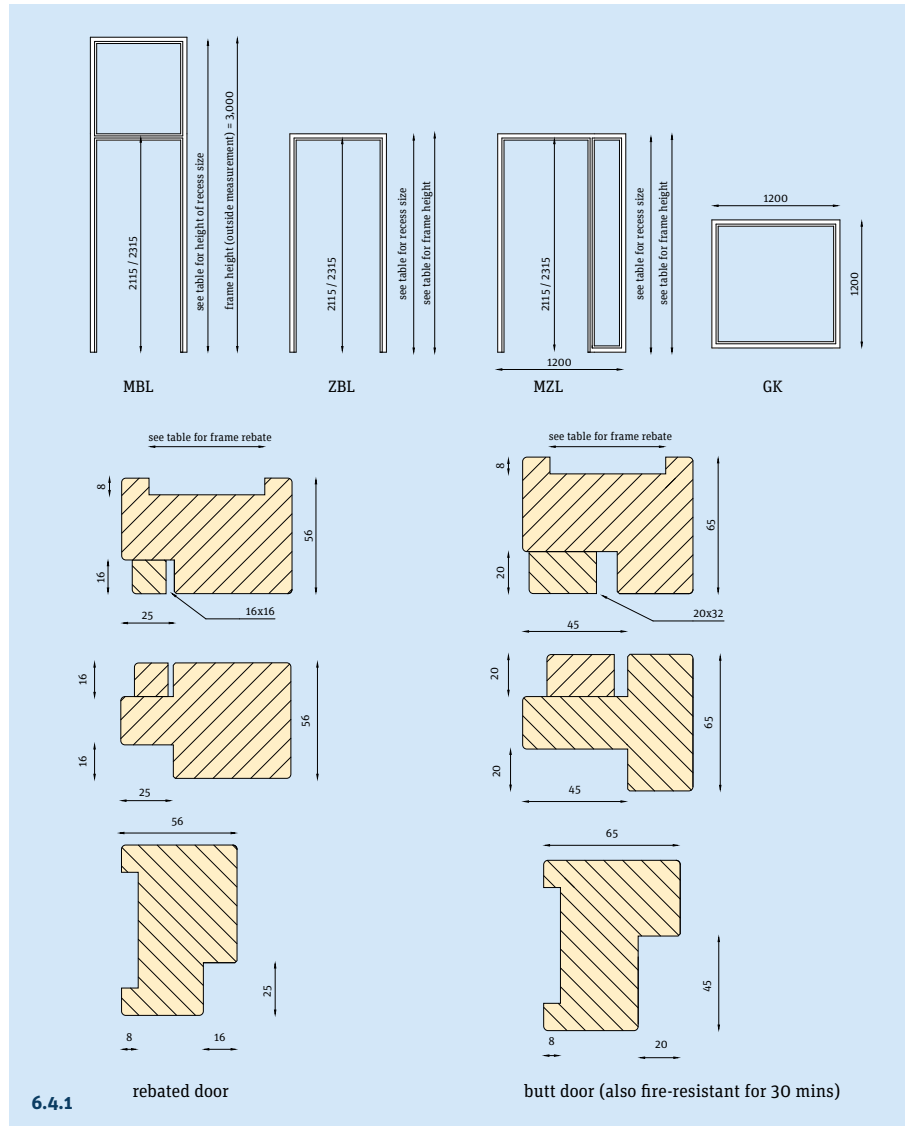


6.3.1 Frame joint

# Pitch pine frames

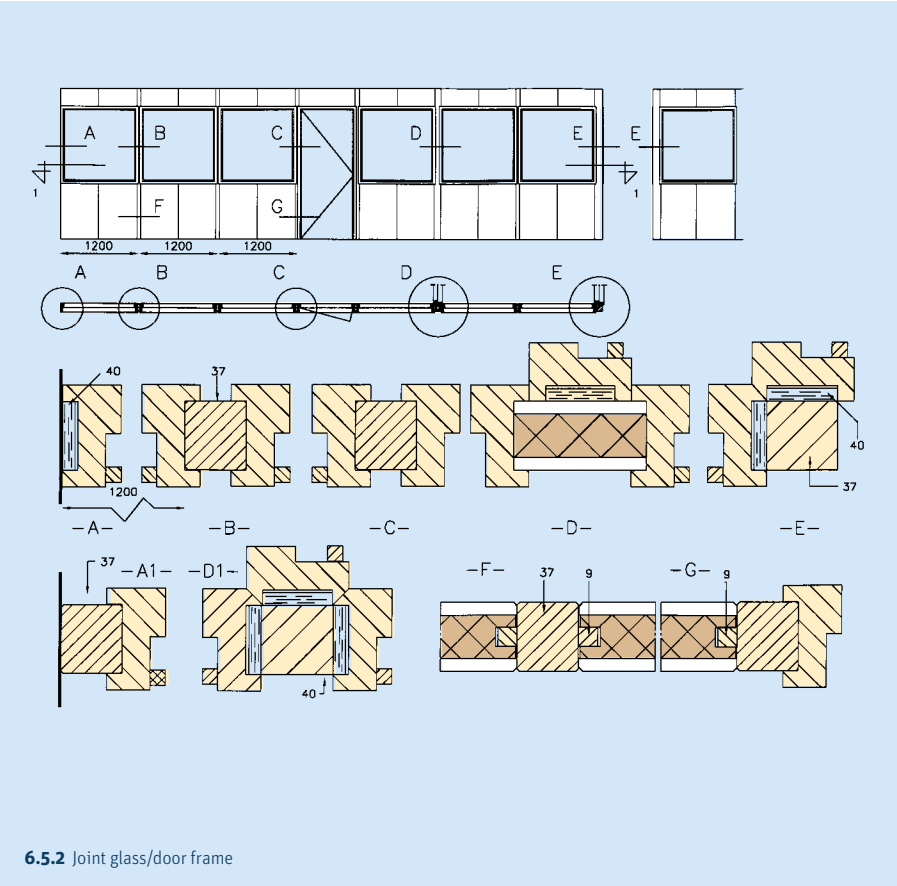
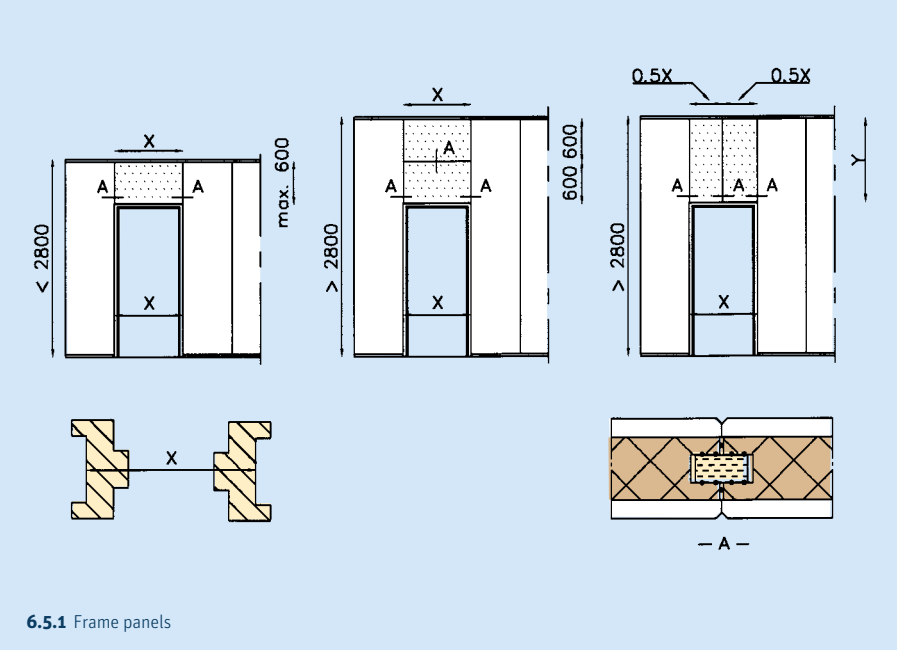
## Detail coding

- 1 Apply FAAYFIX adhesive then, if necessary, fill and finish with a fibre based joint infill material.
- 2 wall socket
- 3 FAAYFIX® glue
- 4 foam band
- 5 vapour inhibitory layer
- 6 whitewood sole piece
- 7 mineral wool
- 8 chipboard tongue
- 9 half wooden tongue
- 10 watertight band
- 11 plastic U-section
- 12 plaster strip
- 13 Pur foam/FAAYFOAM
- 14 edge lath
- 15 block
- 16 I-beam
- 17 T-section
- 18 nonius hanger
- 19 plaster board
- 20 water-repellent plasterboard
- 21 moist coating
- 22 tile glue (apply horizontally)
- 23 silicone paste
- 24 wall tile/floor tile
- 25 whitewood cavity closer
- 26 Meranti/ MDF boarding
- 27 mounting wedge
- 28 coconut felt
- 29 wire shaft
- 30 artificial fibre profile
- 31 front view
- 32 flax
- 33 cardboard
- 34 I-section
- 35 PIR
- 36 mineral wool with glass fibre
- 37 post
- 38 PU kit
- 39 wire cavity
- 40 plywood
- 41 PVC top layer
- 42 ventilation
- 43 extruded polystyrene
- 44 clips
- 45 sound damping attachment
- 46 chipboard
- 47 HPL plate
- 48 cover profile
- 49 steel suspension bracket
- 50 steel edge profile
- 51 connecting rail



Type	Timber dimensions	Mortar key
VP54	56 x 81 mm frame-mounted	55 mm
VP70	56 x 90 mm frame-mounted	71 mm
VP54	65 x 81 mm wall-mounted	55 mm
VP70	65 x 90 mm wall-mounted	71 mm
IW90	65 x 115 mm wall-mounted	91 mm
IW100	65 x 125 mm wall-mounted	101 mm

# Frame panels



# Delivery programme for FAAY wood frames



ZBL DM



MBL DM



MZL DM



Glass frame outer dimensions

Wall thickness	Frame-mounted	Wall-mounted	Frame-mounted	Wall-mounted	Frame-mounted	Wall-mounted	Frame-mounted	Wall-mounted
54 mm	✓	✓	✓	●	✓	✓	✓	●
70 mm	✓	✓	✓	✓	✓	✓	✓	●
90 mm	●	✓	●	●	●	✓	●	●
100 mm	●	✓	●	●	●	✓	●	●

- ✓ Standard in stock, sealed
- Available upon request



# Frame assembly manual

## General

The maximum door height is 2315 mm. If doors shorter or lower are used, then the stiles at the bottom of the frame can be shortened. Always use the measurement in the groove. A free space of 25 mm under the door has been taken into account for the frame, so that the threshold can be adjusted if necessary. The upper threshold is supplied in a standard format of 830 or 930 mm but can be adjusted if necessary.

## Step 1

Place the unpacked components on a clean and smooth floor or work table. Apply enough FAAYFIX® or timber adhesive to the stile pins and the holes of the upper threshold. Slide the pins into the holes and knock firmly into place. Check that joints are parallel using a square. You can now pre-drill the upper threshold and apply the wood screws. Next place the groove plank in the groove at the bottom of the stile and ensure a tight fit. The frame size is established once the groove plank has been fixed into place with small nails



## Step 2

Check the opening direction of the door and construct the frame taking the partition wall into account. Place the frame with the groove around the partition wall and align it using a spirit level. Press the frame as close to the partition as possible. If necessary, a support plank can be temporarily placed at the other side of the frame. Fix the frame in place using the long screws. Remove the support plank (if used) and continue by inserting the within-frame panel. Also fix the other side of the frame to the wall using the long screws. Finally, remove the groove plank.

## Package content

- 2 stiles

## Available separately

-1 upper threshold

## Required equipment:

- inch rule  
- square  
- FAAYFIX® or wood glue

## Fitting materials

- hammer  
- 4 wood screws 6 x 80 mm  
- drill  
- 6 distance screws 6 x 100 mm  
- wooddrill bit 6 mm  
- 6 covering tops  
- handsaw  
- 1 screw bit  
- carpenters knife

## Step 3

Sand lightly before painting. After painting, attach the cover tops.



↑ By bonding the FAAY panels with each other with FAAYFIX®, it creates a massive and very robust wall.





↑ By pounding the chipboard connection spring in the groove with FAAYFIX®, it creates a very solid connection between the individual panels.



↑ Also the connections between the frame panel, frame and wall panel are glued with FAAYFIX®, for one solid whole.

# Delivery programme

Technical specifications							
	Thickness	Weight	Fire-resistance		Insulation U-value	Sound insulation	
			According to NEN 6069	According to EN 1364		Rw	D <sub>st, A,k</sub> Building Decree 2012
VP54	54 mm	28,12 kg/m <sup>2</sup>	-	EI30	1.54 W/m <sup>2</sup> K	30 dB	29 dB
VP54 + 1x add. plaster	64 mm	36,12 kg/m <sup>2</sup>	62 min.	-	1.47 W/m <sup>2</sup> K	35 dB	34 dB
VP54 + 2x add. plaster	73 mm	44,12 kg/m <sup>2</sup>	> 62 min.	-	1.38 W/m <sup>2</sup> K	36 dB	35 dB
SP54	54 mm	23,82 kg/m <sup>2</sup>	< 20 min.	-	1.38 W/m <sup>2</sup> K	27 dB	24 dB
VP70	70 mm	34,20 kg/m <sup>2</sup>	-	EI45	1.23 W/m <sup>2</sup> K	29 dB	28 dB
VP70 + 1x add. plaster	83 mm	43,20 kg/m <sup>2</sup>	-	EI60	1,14 W/m <sup>2</sup> K	35 dB	34 dB
SP70	70 mm	32,00 kg/m <sup>2</sup>	< 20 min.	-	1.20 W/m <sup>2</sup> K	29 dB	28 dB
HV84	84 mm	24,30 kg/m <sup>2</sup>	> 30 min.	-	0.62 W/m <sup>2</sup> K	35 dB <sup>e)</sup>	34 dB
IW90	90 mm	36,80 kg/m <sup>2</sup>	-	EI45	0.68 W/m <sup>2</sup> K	50 dB	49 dB
IW100	100 mm	47,36 kg/m <sup>2</sup>	-	EI60	0.76 W/m <sup>2</sup> K	45 dB	44 dB
IW148	148 mm	58,24 kg/m <sup>2</sup>	-	EI90	0.47 W/m <sup>2</sup> K	56 dB	55 dB
IW200/54 (2x VP54)	200 mm	58,24 kg/m <sup>2</sup>	-	EI90	0.44 W/m <sup>2</sup> K	±59 dB	58 dB
IW200/70 (2x VP54)	200 mm	70,40 kg/m <sup>2</sup>	-	EI120	0.38 W/m <sup>2</sup> K	±59 dB	58 dB
GP22	22 mm	15,40 kg/m <sup>2</sup>	> 30 min.	-	2.77 W/m <sup>2</sup> K <sup>a)</sup>	Improvement approx. ±10-20 dB <sup>b)</sup>	-
VP35	35 mm	23,18 kg/m <sup>2</sup>	45 min.	-	2.13 W/m <sup>2</sup> K <sup>a)</sup>	Improvement approx. ±10-20 dB <sup>b)</sup>	-
PG60	60 mm	9,10 kg/m <sup>2</sup>	< 20 min.	-	0.35 W/m <sup>2</sup> K <sup>c)</sup>	Improvement approx. ±5 dB	-
PG70	70 mm	9,40 kg/m <sup>2</sup>	< 20 min.	-	0.31 W/m <sup>2</sup> K <sup>c)</sup>	Improvement approx. ±5 dB	-
PG90	90 mm	10,00 kg/m <sup>2</sup>	< 20 min.	-	0.27 W/m <sup>2</sup> K <sup>c)</sup>	Improvement approx. ±5 dB	-
2resist® 60	40 mm	15,75 kg/m <sup>2</sup>	-	REI120 <sup>d)</sup>	0.94 W/m <sup>2</sup> K <sup>f)</sup>	48 dB <sup>f)</sup>	47 dB <sup>f)</sup>
2resist® 120	67 mm	29,00 kg/m <sup>2</sup>	-	REI120 <sup>d)</sup>	1.074 W/m <sup>2</sup> K	48 dB <sup>f)</sup>	47 dB <sup>f)</sup>
FR19 VO ceiling	19 mm	8,00 kg/m <sup>2</sup>	> 70 min. <sup>d)</sup>	-	0.44 W/m <sup>2</sup> K <sup>d)</sup>	55 dB <sup>e)</sup>	+3 dB <sup>e)</sup>
GP22 VO ceiling	22 mm	18,00 kg/m <sup>2</sup>	> 75 min. <sup>d)</sup>	-	0.45 W/m <sup>2</sup> K <sup>d)</sup>	55 dB <sup>d)</sup>	-

## Explanation of table

- a) exclusive 40 mm insulation and whole-brick wall
- b) inclusive 40 mm insulation and whole-brick wall
- c) system design inclusive 20 mm air cavity and whole-brick wall
- d) inclusive 65 mm rock wool under wooden floor
- e) inclusive 65 mm rock wool under stone floor >250 kg/m<sup>2</sup>
- f) exclusive roof / floor insulation
- g) 2 x 8 mm clay tested
- h) tested according to EN 1365-2
- i) tested according to EN 1365-2 and EN 1364-2

All our tests have been carried out in accordance with the Dutch and/or European standards. Table date : September 2015.

## Documentation

We can provide documentation about:

- Faay Vianen
- Partition walls
- KBL system
- Indoor climate wall
- Retention walls
- W'all-in-One®
- PG Roofing
- Acoustic insulation and party walls
- Ceiling systems
- 2resist® ceiling system
- Frames
- Education
- Retail
- Cavity barrier
- FAAYFIX® construction adhesive
- FAAYFOAM® adhesive foam
- Assembly instructions
- Wall spray applications

You may request this documentation from us, or download it from [www.faay.com](http://www.faay.com).



Faay Vianen B.V.  
Mijlweg 3, 4131 PJ Vianen  
P.O. Box 116, 4130 EC Vianen  
The Netherlands  
T +31 347 37 66 24  
[info@faay.com](mailto:info@faay.com)  
[www.faay.com](http://www.faay.com)



**Faay Vianen B.V.** is an independent Dutch family company, established in 1972. Founder Cees Faay developed our first wall system. That was the basis for all the wall and ceiling systems we have developed since and which lead the way worldwide.

Thanks to their unique properties, our products have received much **international recognition and certification** from independent bodies. Not without reason are used all over the world!



The range of Faay systems and products, in many construction variations, are available to view in our extensive showroom. Every type of interior wall and ceiling is clearly presented. You are very welcome to visit and to bring your client with you.