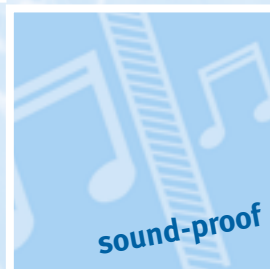




# FAAY Ceiling systems

from core to top quality

5



*Faay Vianen B.V.  
specialist in partition  
walls and ceiling systems  
for over 35 years.*

But not just a 'run-of the mill' supplier! We produce most of our partition walls on the basis of flax waste, a by-product of the linen-, paper- and linseed oil production.

This provides them with exceptional building-physical features: shock-proof, fire-resistant and sound-proofing, thermally insulating, screw-proof and very easy to assemble.

Faay has a wall or ceiling system suitable for every imaginable situation. So it's no surprise that builders and architects feel at home with FAAY, whether it concerns a new build, renovations or utility architecture.

Besides these, the aesthetic qualities are also very high and the flexibility - because our systems can quite easily be disassembled - is unsurpassed.

The quality of FAAY walls and ceilings has been established in KOMO certificates 20196/05 (walls) and 20785/06 (ceilings) and is guaranteed by ISO Norm 9001: 2000.

*FAAY is synonymous with 'a well thought-out product'.  
So it is logical that this same thorough thinking can be  
found in FAAY ceiling systems!*

## The convenience of FAAY ceilings

The and the advantages that are so characteristic of our wall systems, are also applicable to the patented FAAY ceiling system. The total structure guarantees excellent fire-resistance and sound-insulating qualities!

### Free span width 4.2 m

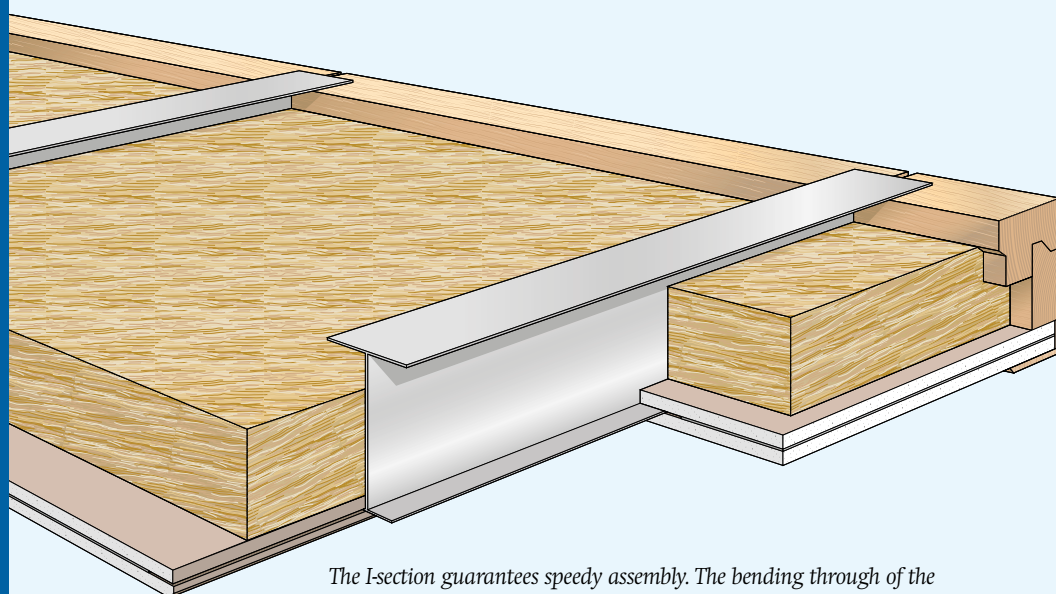
The assembly, with 10 cm high I-sections, counteracts bending of the ceiling elements, up to a free span width of as much as 4.2 metres, including mineral wool! Without mineral wool, a free span width of over 6 metres is even possible (FR19 VO). And of course, the FAAY ceiling system can also be mounted in larger spans. With vibration damping brackets and coupling plates you can span any desired number of meters.

### Perfect party walls

Where the Construction Resolution for party wall situations requires an IcoK of +5 dB, with a FAAY ceiling as much as +12 dB is possible! There is no contact with the floor above, therefore this system is the solution for party-wall ceilings!

### Ease of assembly

With the FAAY mounting system mounting is double-quick. Simple, ingenious and labour-cost saving! After the application of the special side laths, assembly is only a matter of sliding on panels and I-sections. For an even higher sound and fire resistance, you can add insulation material according to your needs. Really a versatile ceiling system!.



*The I-section guarantees speedy assembly. The bending through of the ceiling elements up to 4.2 metres free span width including mineral wool remains amply within the set standards.*

*Fine to have something over your head...*

# FR19 VO ceiling system

## Flexible and concealed detachable

Just like our walls, the great benefit of the FAAY FR19 VO ceiling system is that it is detachable. The FR19 ceiling tiles, composed of mineral fibres are concealed and easily detachable, thanks to the special milling in. Work on installations above the ceiling system is always possible! Extremely suitable therefore for applications in renovation and new building and utility sector. Being able to disassemble our systems is the reason for a number of chain store companies for arranging their showrooms with FAAY walls and ceilings. Faay offers an unsurpassed flexibility and short delivery

times. Besides the unique element-profiling the mineral fibre panels of the FR19 VO ceiling system have a high density. This gives them excellent fire-resistance, sound insulating and acoustic qualities, which makes this the ceiling system for renovation / new building and building of public utilities.

## FR19 VO ceiling

With the FR19 VO-system the ceiling tiles are delivered in a fixed size of 60 x 120 cm. Over the sections 65 mm thick mineral wool plates may be laid, which provides the excellent sound insulation. For an optimal fire resistance the mineral wool plates are mounted against the

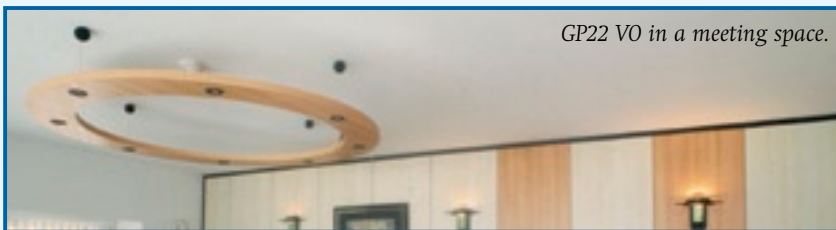


*Concealed detachable FR19 VO ceiling.*

bottom of the floor construction. The FR19 tiles also distinguish themselves from the GP22 panels by the light weight of the plates. They are also concealed detachable and finished at once. Thanks to the light weight, you can realize free spans of up to 6.3 m. (without mineral wool). The FR19 tile has a fine perforation for the benefit of the sound absorption ( $\alpha$  0,63 at 500Hz) and has a primed white top layer with a beautiful, fine structure.

*Wall-to-wall elements*

# GP22 VO ceiling system



*GP22 VO in a meeting space.*

The FAAY ceiling system made from GP22 elements is especially suitable for the renovation and maintenance market and for commercial and industrial buildings. It is often applied because of its excellent fire-resistance and strong sound-insulating qualities. GP22 VO is also available with vinyl. Thanks to the ready for use principle, this provides a higher flexibility and a faster delivery.

## GP22 panels

GP22 consists of a double plaster board with a 2.5 mm thick chipboard in between. If the system is to be both fire resistant and sound-damping, then an insulation blanket of 65 mm is attached to the bottom of the floor construction. For only sound insulation, the blankets may lie between the steel sections

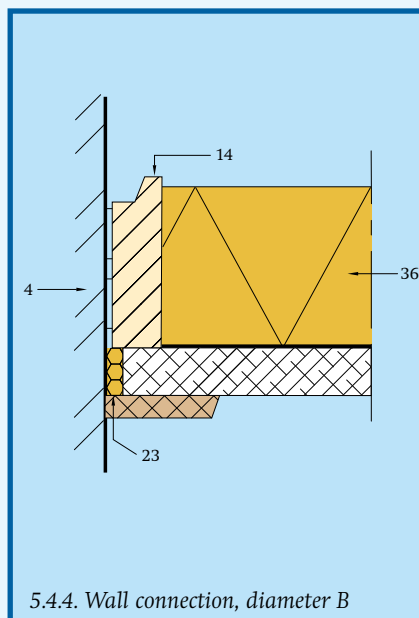
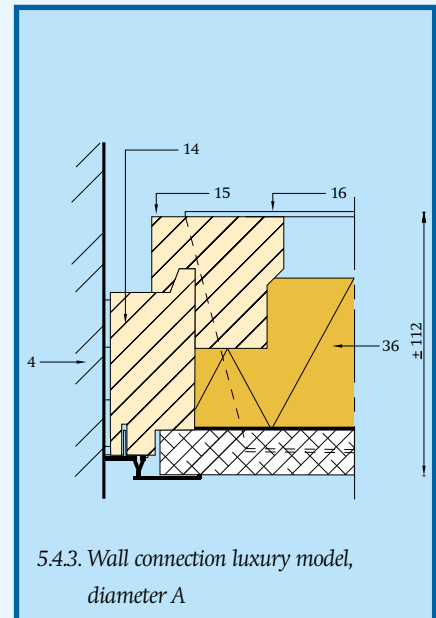
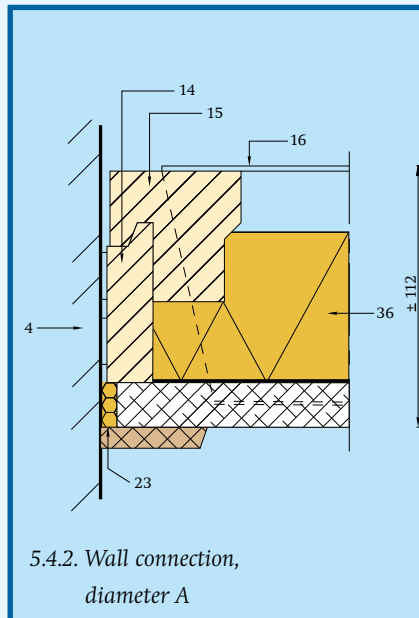
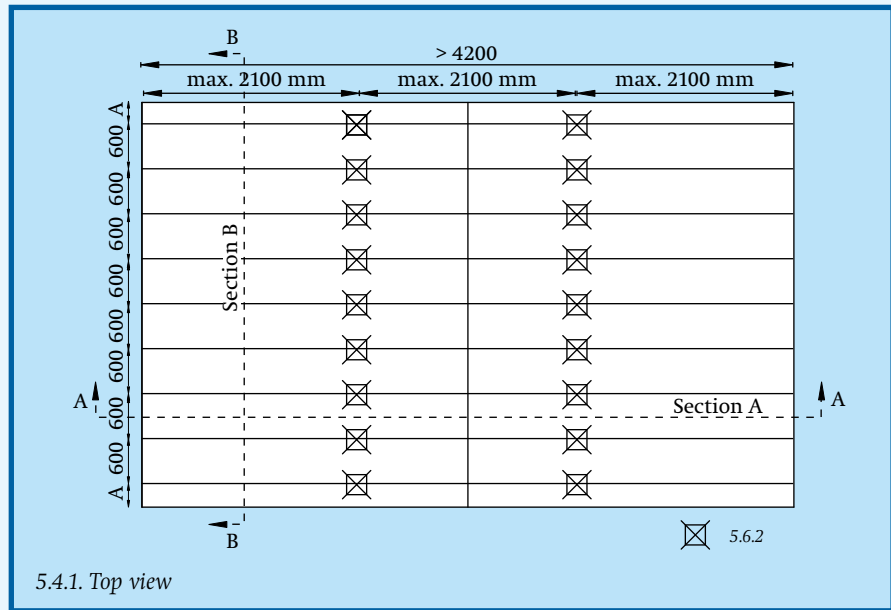
## Versatile finish!

The finish of the GP22 VO system also proves to be extremely flexible. FAAY Wall spraying and distemper as well as vinyl on the ceilings, with the seams visible, gives a superb result. If the elements are bonded with FAAYFIX®, the seams can easily be smoothed out with FAAY FILL & FINISH and finished with a rough structured paint or with FAAY Wall spraying. Do you have a finish with a moderate structure which is influenced by floodlight? The GP22, executed with bevelled edges, is in that case more suitable. It ensures a wider strip for skimming.

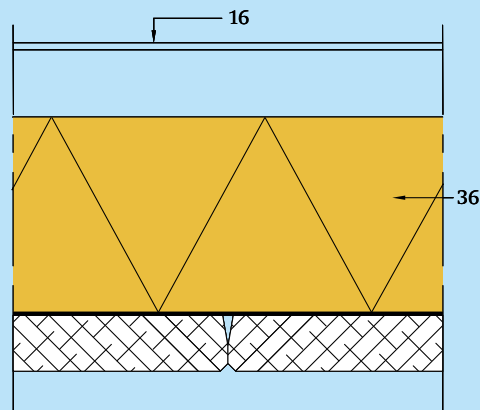
## Detail coding

- 1 possibly glue with FAAYFIX® and fill and finish off with FAAY FILL & FINISH
- 2 wall socket
- 3 FAAYFIX® glue
- 4 foam band
- 5 vapour inhibitory layer
- 6 pine sole piece
- 7 mineral wool
- 8 chipboard tongue
- 9 half wooden tongue
- 10 watertight band
- 11 plastic U-section
- 12 corner bead
- 13 Pur foam
- 14 edge lath
- 15 block
- 16 I-beam
- 17 T-section
- 18 nonius hanger
- 19 plaster board
- 20 water-repellent plasterboard
- 21 moist coating
- 22 tile glue (apply horizontally)
- 23 silicone paste
- 24 wall tile/floor tile
- 25 pine lath
- 26 Meranti/ MDF boarding
- 27 mounting wedge
- 28 coconut felt
- 29 wire shaft
- 30 artificial fibre profile
- 31 front view
- 32 flax
- 33 cardboard
- 34 I-section
- 35 phenolic foam
- 36 mineral wool with glass fibre
- 37 post
- 38 PU kit
- 39 wire cavity
- 40 multiplex
- 41 PVC top layer
- 42 ventilation
- 43 extruded polystyrene
- 44 clips
- 45 sound damping attachment
- 46 chipboard
- 47 HPL plate
- 48 cover profile
- 49 steel suspension bracket
- 50 steel edge profile
- 51 connection rail

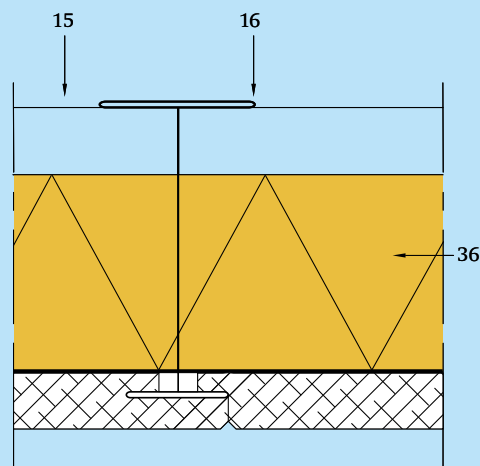
# FR19 VO



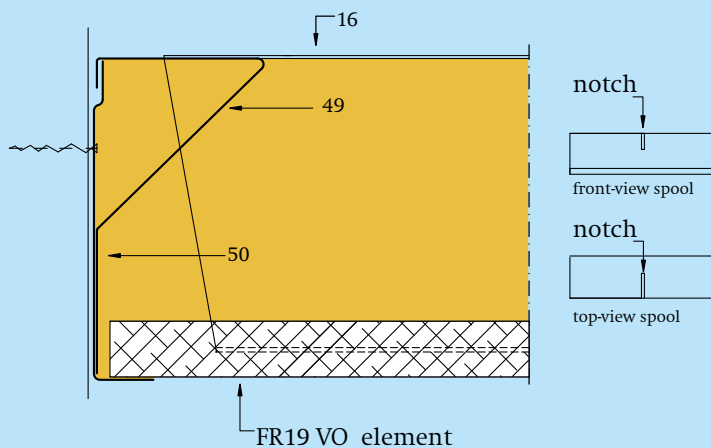




5.5.1. Connection panels, diameter B



5.5.2. Joint, diameter B



5.5.3. Wall connection FR19 VO fire class A2, diameter A

## Technical details FR19 VO



1200 mm

Length



19 mm

Thickness



8 kg/m<sup>2</sup>

Weight



>70 min  
(NEN 6069)  
(incl. mineral wool  
under wooden floor)

Fire  
resistance



1,98 m<sup>2</sup> K/W (incl.  
65 mm mineral wool)

Rc



$I_{luk, lab}$   
NEN 5079 +3 dB  
 $I_{cok, lab}$   
NEN 5079 +12 dB  
(incl. mineral wool  
under stony floor)

Sound  
insulation



KOMO attestation-  
with-certificate  
20785/06

## FR19 VO Fire class A2



1200 mm

Length



19 mm

Thickness



5,6 kg/m<sup>2</sup>

Weight



(F30) 30-40 min  
(under wooden floor)  
(F90) 90 min  
(under concrete floor)

Fire  
resistance



1,98 m<sup>2</sup> K/W (incl.  
65 mm mineral wool)

Rc



$I_{luk, lab}$   
NEN 5079 +3 dB  
 $I_{cok, lab}$   
NEN 5079 +12 dB  
(including mineral  
wool under stony floor)

Sound  
insulation

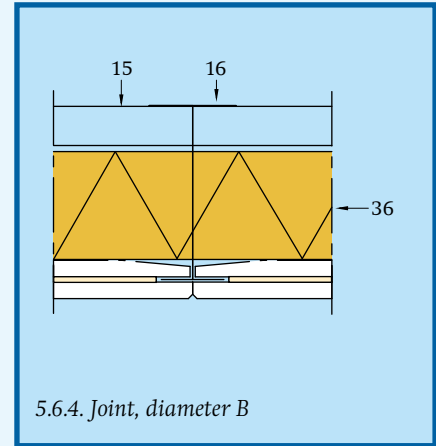
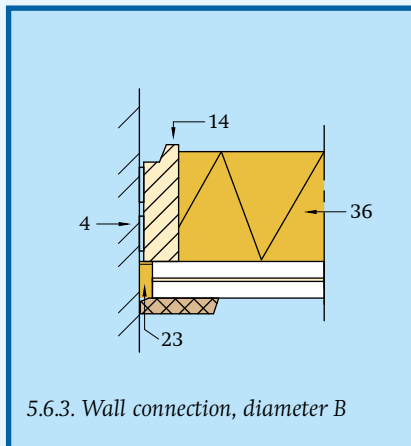
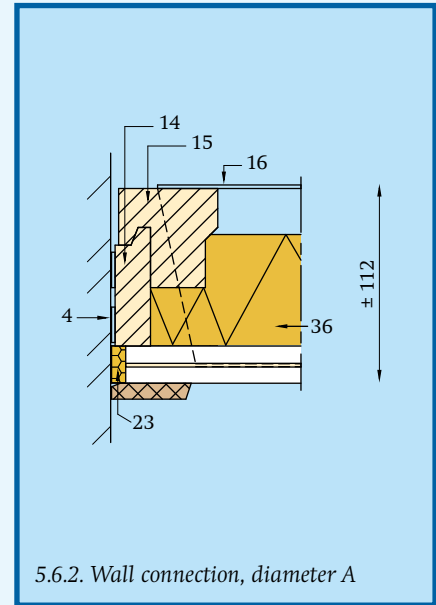
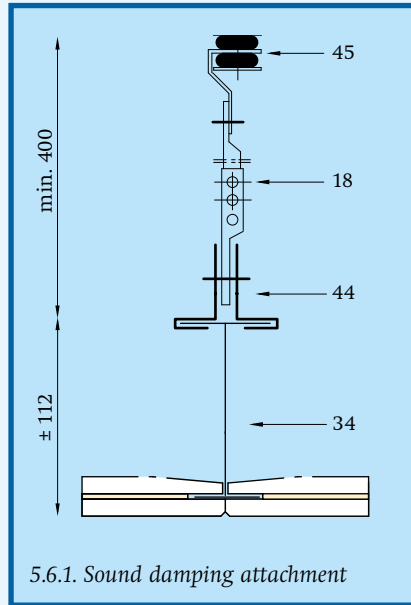


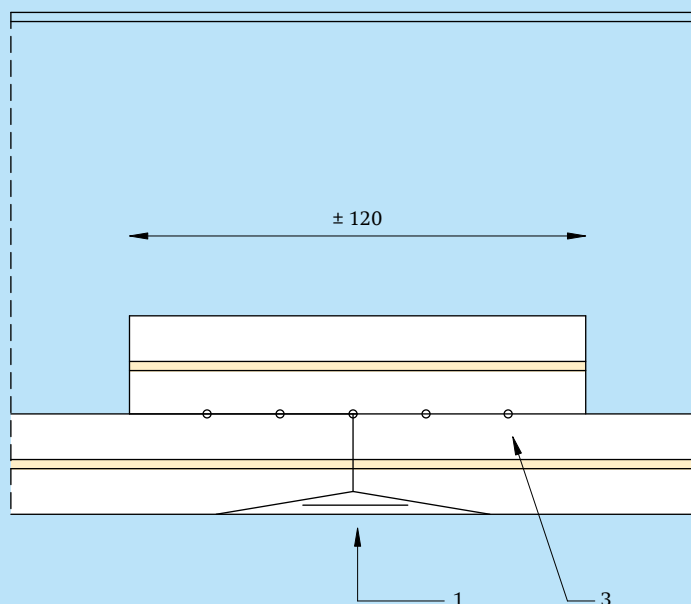
KOMO attestation-  
with-certificate  
20785/06

## Detail coding

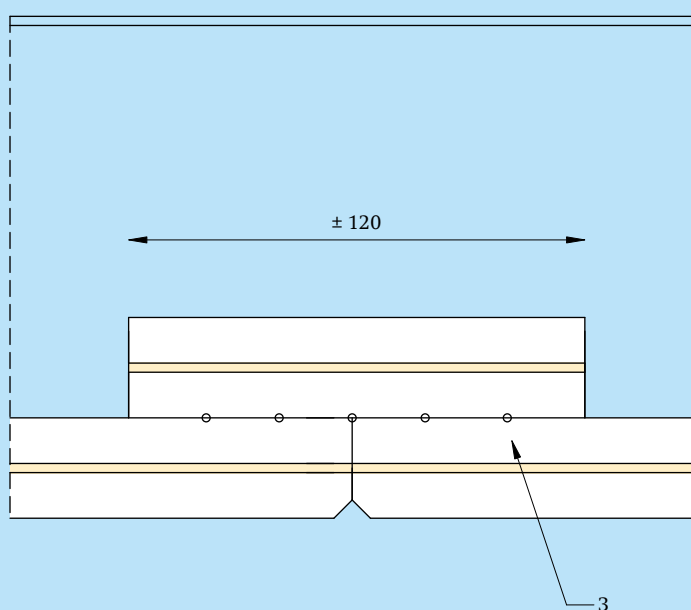
- 1 possibly glue with FAAYFIX® and fill and finish off with FAAY FILL & FINISH
- 2 wall socket
- 3 FAAYFIX® glue
- 4 foam band
- 5 vapour inhibitory layer
- 6 pine sole piece
- 7 mineral wool
- 8 chipboard tongue
- 9 half wooden tongue
- 10 watertight band
- 11 plastic U-section
- 12 corner bead
- 13 Pur foam
- 14 edge lath
- 15 block
- 16 I-beam
- 17 T-section
- 18 nonius hanger
- 19 plaster board
- 20 water-repellent plasterboard
- 21 moist coating
- 22 tile glue (apply horizontally)
- 23 silicone paste
- 24 wall tile/floor tile
- 25 pine lath
- 26 Meranti/ MDF boarding
- 27 mounting wedge
- 28 coconut felt
- 29 wire shaft
- 30 artificial fibre profile
- 31 front view
- 32 flax
- 33 cardboard
- 34 I-section
- 35 phenolic foam
- 36 mineral wool with glass fibre
- 37 post
- 38 PU kit
- 39 wire cavity
- 40 multiplex
- 41 PVC top layer
- 42 ventilation
- 43 extruded polystyrene
- 44 clips
- 45 sound damping attachment
- 46 chipboard
- 47 HPL plate
- 48 cover profile
- 49 steel suspension bracket
- 50 steel edge profile
- 51 connection rail

# GP22 VO





5.7.1. Butt joint GP22 Element, diameter A



5.7.2. Butt joint GP22 Element, diameter A

## Technical details GP22 VO



2400, 2600, 2800,  
3000, 3200, 3600 mm

Length



22 mm

Thickness



18 kg/m<sup>2</sup>

Weight



> 75 min  
(NEN 6069)  
(incl. mineral wool  
under wooden floor)

Fire  
resistance



1,96 m<sup>2</sup> K/W (incl.  
65 mm mineral wool)

Rc



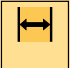


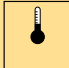

$I_{\text{uik, lab}}$   
NEN 5079 +3 dB  
 $I_{\text{cok, lab}}$   
NEN 5079 +12 dB  
(incl. mineral wool  
under wooden floor)

Sound  
insulation



KOMO attestation-  
with-certificate  
20785/06

# Supply programme FAAY wall and ceiling systems

| Technical details  |  Thickness |  Weight |  Fire resistance |  Rc |  Sound insulation |                     |
|--------------------|---|--|---|---|--|---------------------|
|                    |   |  |   |   | $I_{luk, lab}$<br>NEN 5079   | $R_w$               |
| VP54               | 54 mm   | 28,12 kg/m <sup>2</sup>  | 45 min.   | 0,42 m <sup>2</sup> K/W   | -24 dB   | 30 dB               |
| VP54 + 1x plaster  | 64 mm   | 36,12 kg/m <sup>2</sup>  | 62 min.   | 0,45 m <sup>2</sup> K/W   | -18 dB   | 35 dB               |
| VP54 + 2x plaster  | 73 mm   | 44,12 kg/m <sup>2</sup>  | >62 min.  | 0,49 m <sup>2</sup> K/W   | -17 dB   | 36 dB               |
| SP54               | 54 mm   | 23,82 kg/m <sup>2</sup>  | ≤20 min.  | 0,49 m <sup>2</sup> K/W   | -28 dB   | 27 dB               |
| VP70               | 70 mm   | 34,20 kg/m <sup>2</sup>  | 45 min.   | 0,58 m <sup>2</sup> K/W   | -24 dB   | 29 dB               |
| SP70               | 70 mm   | 32,00 kg/m <sup>2</sup>  | 45 min.   | 0,60 m <sup>2</sup> K/W   | -24 dB   | 29 dB               |
| IW90               | 90 mm   | 36,80 kg/m <sup>2</sup>  | 82 min.   | 1,25 m <sup>2</sup> K/W   | -6 dB  | 50 dB               |
| IW100              | 100 mm  | 47,36 kg/m <sup>2</sup>  | 75 min.   | 1,09 m <sup>2</sup> K/W   | -8 dB  | 45 dB               |
| IW100 + 1x plaster | 110 mm  | 55,36 kg/m <sup>2</sup>  | >90 min.  | 1,13 m <sup>2</sup> K/W   | -4 dB  | 49 dB               |
| IW135              | 135 mm  | 51,36 kg/m <sup>2</sup>  | >75 min.  | 2,17 m <sup>2</sup> K/W   | -6 dB  | 49 dB               |
| IW148              | 148 mm  | 58,24 kg/m <sup>2</sup>  | 120 min.  | 1,89 m <sup>2</sup> K/W   | +3 dB  | 56 dB               |
| IW200/54 (2x VP54) | 200 mm  | 58,24 kg/m <sup>2</sup>  | >120 min.   | 2,07 m <sup>2</sup> K/W   | +6 dB  | ±59 dB              |
| IW200/70 (2x VP70) | 200 mm  | 70,40 kg/m <sup>2</sup>  | >120 min.   | 2,39 m <sup>2</sup> K/W   | +6 dB  | ±59 dB              |
| GP22               | 22 mm   | 15,40 kg/m <sup>2</sup>  | >30 min.  | 1,38 m <sup>2</sup> K/W <sup>a)</sup>   | Improvement ca. 10-20 dB   |                     |
| VP35               | 35 mm   | 23,18 kg/m <sup>2</sup>  | 45 min.   | 1,49 m <sup>2</sup> K/W <sup>a)</sup>   | Improvement ca. 10-20 dB   |                     |
| GF50               | 50 mm   | 10,00 kg/m <sup>2</sup>  | ≤12 min.  | 1,54 m <sup>2</sup> K/W <sup>b)</sup>   | n.a.   | n.a.                |
| PG60               | 60 mm   | 9,20 kg/m <sup>2</sup>   | <20 min.  | 2,60 m <sup>2</sup> K/W <sup>b)</sup>   | n.a.   | n.a.                |
| PG70               | 70 mm   | 9,50 kg/m <sup>2</sup>   | <20 min.  | 3,20 m <sup>2</sup> K/W <sup>b)</sup>   | n.a.   | n.a.                |
| GP22 VO ceiling    | 22 mm   | 18,00 kg/m <sup>2</sup>  | >75 min. <sup>c)</sup>  | 1,96 m <sup>2</sup> K/W <sup>e)</sup>   | +3 dB <sup>c)</sup>  | 55 dB <sup>c)</sup> |
| FR19 VO ceiling    | 19 mm   | 8,00 kg/m <sup>2</sup>   | >70 min. <sup>c)</sup>  | 1,98 m <sup>2</sup> K/W <sup>e)</sup>   | +3 dB <sup>d)</sup>  | 55 dB <sup>d)</sup> |

Formaldehyde: class E1

a) R-value element inclusive 40 mm insulation en one-brick wall  
b) Rc - retention wall + 20 mm air cavity and one-brick wall  
c) inclusive mineral wool under wooden floor  
d) inclusive mineral wool under rocky ground  
e) inclusive 65 mm mineral wool

Table date April 2009

## Extensive showroom

In our showroom all the systems and products are arranged in many variations. Each type of wall and ceiling is presented in a surveyable manner. You are quite welcome, also together with your client.

## Useful workshops

Faay regularly organizes workshops where the tricks of the assembly trade are taught to you. Still more gain of time and ease of assembly are the

result. The maximum number of participants per workshop is 10 persons, so that everybody can be trained personally.

## Modern AV-room

In the spacious audio-visual presentation room all the technical aids are available to give advanced presentations in any form.

## Documentation

Besides the brochure about Ceiling systems there is

documentation available about:

- Wall and ceiling systems in general
- Partitions
- KBL-system
- Retention walls
- Insulation walls & party walls
- Frames
- Prefab cavity barrier
- FAAY FILL & FINISH
- FAAYFIX® assembly glue
- Assembly instruction
- Wall spraying.

This documentation will be sent to you at your request or can be downloaded from our website.

