

FAAY Insulation walls & party walls

from core to top quality



4



*Faay Vianen B.V.
specialist in partition
walls and ceiling systems
for over 35 years.*

But not just a 'run-of the mill' supplier! We produce most of our partition walls on the basis of flax waste, a by-product of the linen-, paper- and linseed oil production.

This provides them with exceptional building-physical features: shock-proof, fire-resistant and sound-proofing, thermally insulating, screw-proof and very easy to assemble.

Faay has a wall or ceiling system suitable for every imaginable situation. So it's no surprise that builders and architects feel at home with FAAY, whether it concerns a new build, renovations or utility architecture.

Besides these, the aesthetic qualities are also very high and the flexibility - because our systems can quite easily be disassembled - is unsurpassed.

The quality of FAAY walls and ceilings has been established in KOMO certificates 20196/09 (walls) and 20785/09 (ceilings) and is guaranteed by ISO Norm 9001: 2000.

Within the FAAY range of products four wall applications can be distinguished: partitions, double walls, insulation walls and party walls.

Insulation walls and party walls

In this brochure, the insulation walls and the party walls stand at the centre. Both types of walls dispose of excellent building-physical features (especially sound- and fire resistance), but in practice there are often situations in which, when a party wall is required, an insulation wall is preferable yet. For example in staff offices, hotel rooms and lawyers' offices.



Party walls in a hotel.

Insulation walls

For insulation walls, you can choose between the types IW90, IW100 and IW135. These wall types are mounted and coupled to each other with steel I- or TT-sections, which warrants a good stability. The construction of the IW90 is rather light and simple. The 100 mm thick IW100 is screw- and nail-resistant and even heavy objects (washbasins, etc.) can be attached without any special provisions. As to applications for both types, especially offices, schools,

hospitals, laboratories, as well as the house-building sector qualify.

For rooms with free heights of approx. 6.30 m. where high demands are set to sound insulation, there is also the IW135 wall.

After-closure walls

Besides the steel I-sections, FAAY now also has TT-sections. Contrary to the I-section, this system can be built up in a single-scale system. First one builds up one wall, and then, after laying your installations, the other wall is screwed in with the TT-section.

It is also possible to place the TT-sections at random distances from each other and link them vertically with a strip of multiplex or plaster board. In this way, you can provide the wall with the sound insulation and/or fire resistance that is required. With these profiles, it is you who determines how wide the cavity will be. And what can be included in the wall as to installation provisions and insulation! The TT-section system is especially useful when there is much installation work to be done or where this is anticipated in the longer term. Since the wall is detachable, internal wall operations are no problem. Examples of applications of the TT-section



When a complex of apartments was being built, the choice for FAAY insulation walls was rather quickly made.

are the social services, schools, offices and public buildings.

Sound insulation & fire resistance

Whether you are using our Insulation walls in combination with the I-section or the TT-section, the sound insulation and fire resistance remain very high.

Vinyl

The development of the FAAY products has not come to an end yet. The prefab cladding possibilities, for instance, are continuously on the move. A very wide palette of colours in vinyl- and HPL cladding is available to meet the current trends. Suwide consists of an upper layer of vinyl on a woven textile base. Suwide is durable, washable, resistant to light, scratching, wear, impact, bacteria and fire and can be disinfected, according to various international standards.

Party walls

In the category of party walls, FAAY has the types IW148 and IW200 available. Both offer an ideal solution for building situations where a high level of sound

insulation is a prerequisite.

Much-used applications include renovation projects, hotels, splitting up houses and sound studios. Thanks to the slight thicknesses of 148 and 200 mm, FAAY party walls are not only sound damping, but also space saving.

Processing

For the processing of the wall, Faay has formulated very accurate processing conditions, which you can request at Faay's. Of course, you can also turn to Faay for a good advice or for more information about sound insulation and fire resistance, we shall be pleased to give you advice.

Finish

The walls can be treated with any contemporary finish (such as FAAY Wall spraying paint, wallpaper, glass fibre, ornamental plaster, tiles and plaster) without any preparatory work. All walls can also be delivered with the FAAY deluxe skirting board system. This skirting board system is much applied in combination with the many finishing possibilities such as vinyl or HPL.

Flexible system

An advantage of the FAAY system is that the wall- and ceiling elements can be easily disassembled, provided that they have not been glued together. Even after many years it is no problem at all to reuse the walls and ceilings elsewhere. There is no greater flexibility! These advantages of course also apply for the insulation- and party walls!

Cost saving

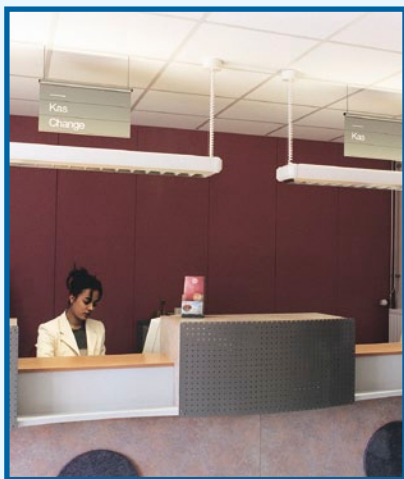
The insulation walls and party walls are labour saving thanks to their building speed. This is caused by the simple assembly details. FAAY panels are two-faced plating, cavity filling and framework in one. This means a considerable saving on the assembly costs. This applies for all the FAAY wall- and ceiling systems, for that matter.

The IW90 and IW100 insulation walls of FAAY offer perfect solutions for situations in which high sound insulation demands are set. Examples are offices, hospitals, house building and such.

Insulation walls IW90 and IW100

IW90

The IW90 is assembled on the building site out of two elements GP22 with a cavity of 46 mm. The wall panels are linked together by means of steel I- or TT-sections. Then the cavity is filled with mineral wool.



IW100 applied in banks buildings.

IW100

The IW100 is assembled on the building site out of two elements VP35 with a cavity of 30 mm. The wall panels are linked together by means of steel I- or TT-sections that guarantee a good stability.

The IW100 with at least 45 minutes of fire resistance can be upgraded to 90 minutes fire resistance at least by just attaching a plasterboard of 12.5 mm on both sides. This system, the IW125, is a massive dry building system and is much used, especially in Germany, for emergency routes in hotels and public buildings. This is because of the additional fire resistance.

Speed

In spite of the two-scale' system, the IW90 and the IW100 can yet be built up rather quickly.

High insulation value and fire resistance

The IW90 and the IW100 have a very high sound insulation value and fire resistance. With only 90 mm thick construction, the IW90 reaches an insulation value of as much as 50 dB!

Screw-proof

The IW90 has a cavity width of 46 mm with an exceptionally high screw resistance of 25 kg per screw, without any plugs and without any supporting board.

In combination with the TT-section, you can utilize this screw resistance on the outside but also from the inside. For a higher screw resistance, see detail drawing (4.6.3. Fixing heavy objects).

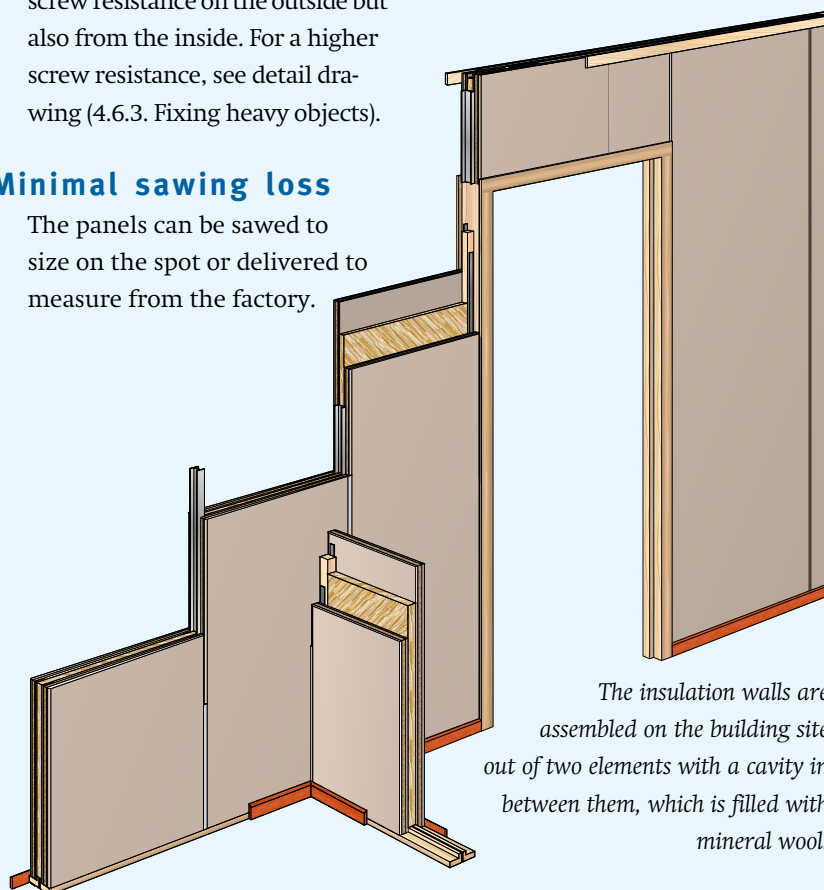
Minimal sawing loss

The panels can be sawed to size on the spot or delivered to measure from the factory.

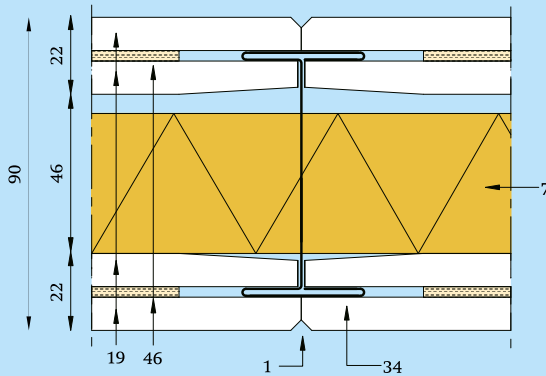
As the assortment has as many as seven standard sizes (from 1000 to 3600 mm) sawing loss is practically negligible.

Casing panel

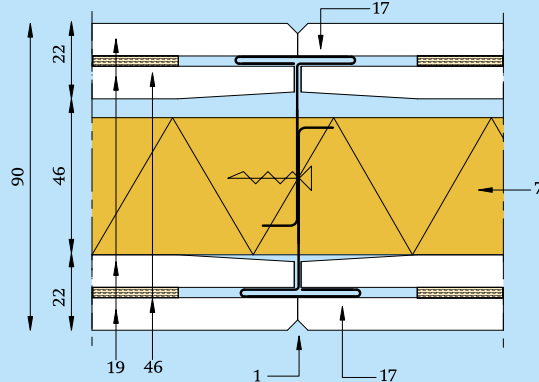
By means of casing panels at the top, casings can be integrated into a wall rather quickly and without any sawing loss. All casings are provided with fasteners and rubber rabbeted profile. The supply programme of FAAY casings (Brochure 6) will be sent to you upon request or can be downloaded from our website.



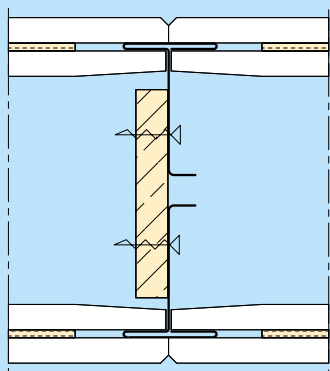
The insulation walls are assembled on the building site out of two elements with a cavity in between them, which is filled with mineral wool.



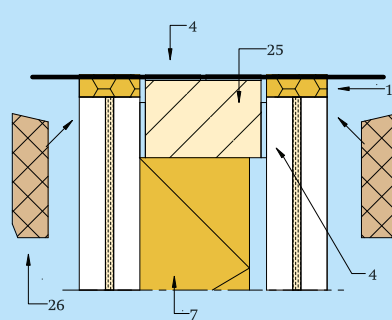
4.5.1. I-section joint



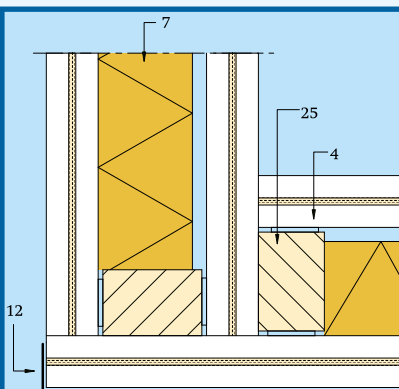
4.5.2. TT-section joint



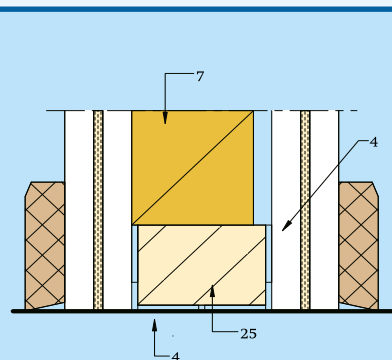
4.5.3. Variable width of cavity



4.5.4. Ceiling connection



4.5.5. Corner joint



4.5.6. Floor connection

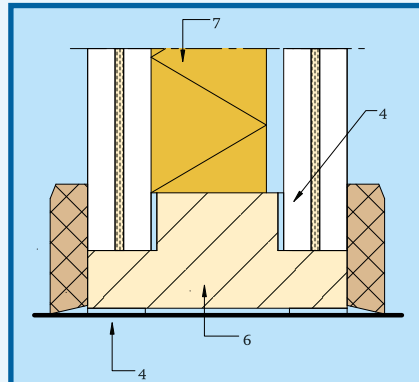
Detail coding

- 1 possibly glue with FAAYFIX® and fill and finish off with FAAY FILL & FINISH
- 2 wall socket
- 3 FAAYFIX® glue
- 4 foam band
- 5 vapour inhibitory layer
- 6 pine sole piece
- 7 mineral wool
- 8 chipboard tongue
- 9 half wooden tongue
- 10 watertight band
- 11 plastic U-section
- 12 corner bead
- 13 Pur foam
- 14 edge lath
- 15 block
- 16 I-beam
- 17 T-section
- 18 nonius hanger
- 19 plaster board
- 20 water-repellent plasterboard
- 21 moist coating
- 22 tile glue (apply horizontally)
- 23 silicone paste
- 24 wall tile/floor tile
- 25 pine lath
- 26 Meranti/ MDF boarding
- 27 mounting wedge
- 28 coconut felt
- 29 wire shaft
- 30 artificial fibre profile
- 31 front view
- 32 flax
- 33 cardboard
- 34 I-section
- 35 phenolic foam
- 36 mineral wool with glass fibre
- 37 post
- 38 PU kit
- 39 wire cavity
- 40 multiplex
- 41 PVC top layer
- 42 ventilation
- 43 extruded polystyrene
- 44 clips
- 45 sound damping attachment
- 46 chipboard
- 47 HPL plate
- 48 cover profile
- 49 steel suspension bracket
- 50 steel edge profile
- 51 connection rail

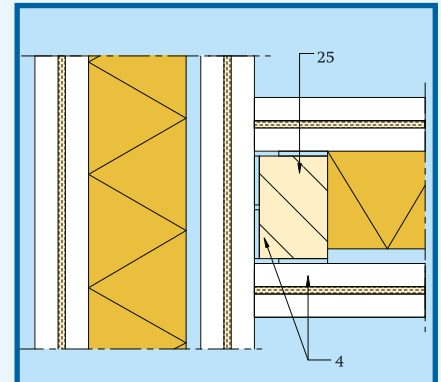
Detail coding

- 1 possibly glue with FAAYFIX® and fill and finish off with FAAY FILL & FINISH
- 2 wall socket
- 3 FAAYFIX® glue
- 4 foam band
- 5 vapour inhibitory layer
- 6 pine sole piece
- 7 mineral wool
- 8 chipboard tongue
- 9 half wooden tongue
- 10 watertight band
- 11 plastic U-section
- 12 corner bead
- 13 Pur foam
- 14 edge lath
- 15 block
- 16 I-beam
- 17 T-section
- 18 nonius hanger
- 19 plaster board
- 20 water-repellent plasterboard
- 21 moist coating
- 22 tile glue (apply horizontally)
- 23 silicone paste
- 24 wall tile/floor tile
- 25 pine lath
- 26 Meranti/ MDF boarding
- 27 mounting wedge
- 28 coconut felt
- 29 wire shaft
- 30 artificial fibre profile
- 31 front view
- 32 flax
- 33 cardboard
- 34 I-section
- 35 phenolic foam
- 36 mineral wool with glass fibre
- 37 post
- 38 PU kit
- 39 wire cavity
- 40 multiplex
- 41 PVC top layer
- 42 ventilation
- 43 extruded polystyrene
- 44 clips
- 45 sound damping attachment
- 46 chipboard
- 47 HPL plate
- 48 cover profile
- 49 steel suspension bracket
- 50 steel edge profile
- 51 connection rail

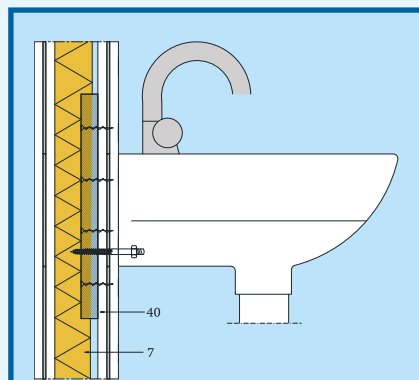
IW90



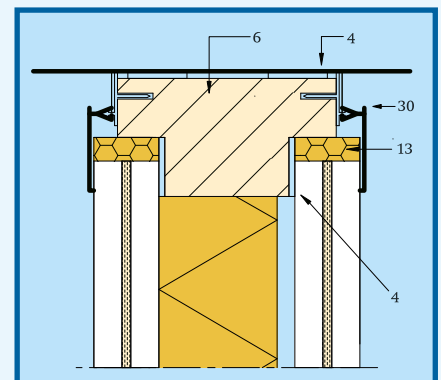
4.6.1. Floor connection



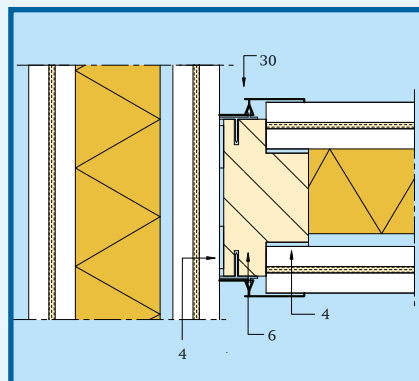
4.6.2. Connection



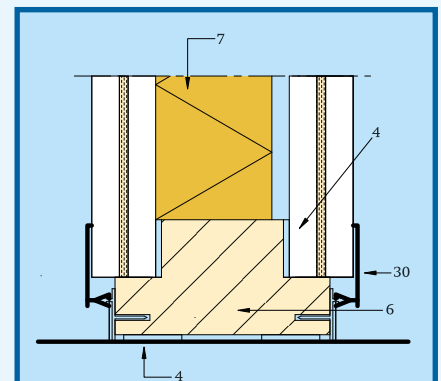
4.6.3. Fixing heavy objects



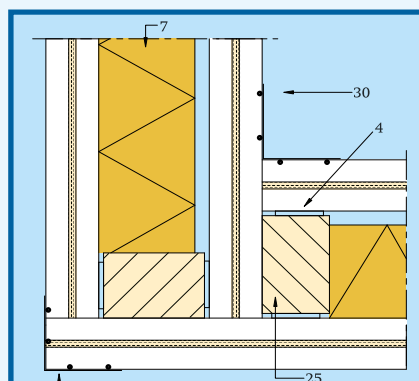
4.6.4. Ceiling connection deluxe



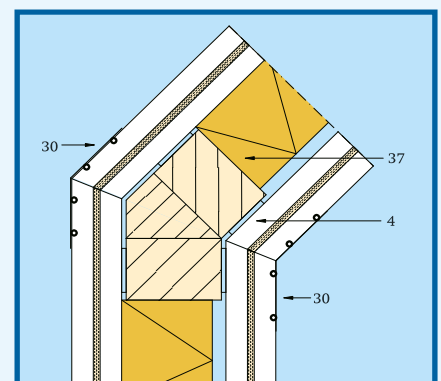
4.6.5. Connection deluxe



4.6.6. Floor connection deluxe



4.6.7. Corner joint 90° deluxe



4.6.8. Corner joint 45° deluxe

IW100

Technical details

IW90



2400, 2600, 2800,
3000, 3200, 3600 mm

Lengths



90 mm

Thickness



36,8 kg/m²

Weight



82 min.

Fire resistance



1,25 m² K/W

Rc



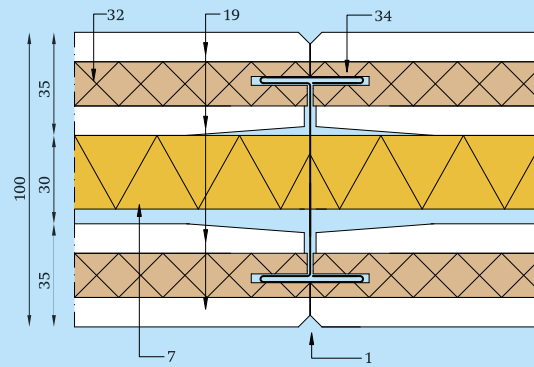
$I_{\text{luk, lab}}$
NEN 5079 -6 dB

Sound insulation

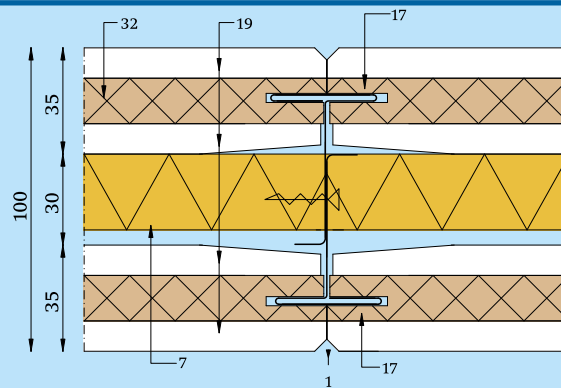
Rw 50 dB



KOMO
attestation with
certificate 20196/09



4.7.1. I-section joint



4.7.2. TT-section joint

Technical details

IW100



2400, 2600, 2800,
3000, 3200, 3600 mm

Lengths



100 mm

Thickness



47,36 kg/m²

Weight



75 min.

Fire resistance



1,09 m² K/W

Rc



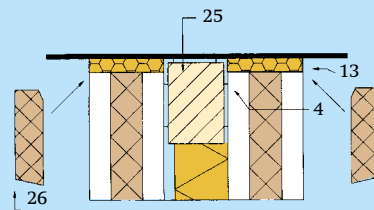
$I_{\text{luk, lab}}$
NEN 5079 -8 dB

Sound insulation

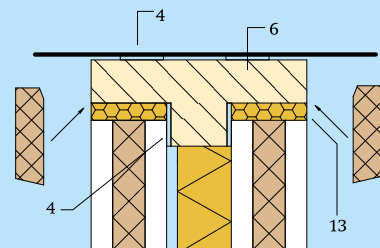
Rw 45 dB



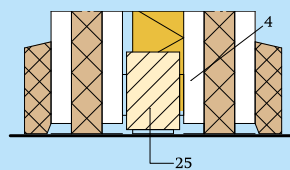
KOMO
attestation with
certificate 20196/09



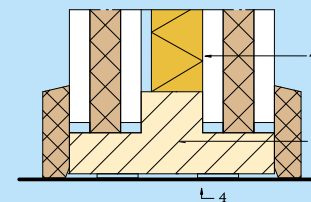
4.7.3. Ceiling connection
wooden cavity closer



4.7.4. Ceiling connection deal wedge



4.7.5. Floor connection
wooden cavity closer

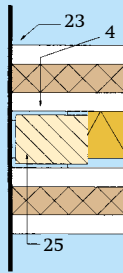


4.7.6. Floor connection deal wedge

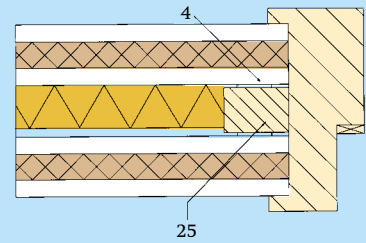
Detail coding

- 1 possibly glue with FAAYFIX® and fill and finish off with FAAY FILL & FINISH
- 2 wall socket
- 3 FAAYFIX® glue
- 4 foam band
- 5 vapour inhibitory layer
- 6 pine sole piece
- 7 mineral wool
- 8 chipboard tongue
- 9 half wooden tongue
- 10 watertight band
- 11 plastic U-section
- 12 corner bead
- 13 Pur foam
- 14 edge lath
- 15 block
- 16 I-beam
- 17 T-section
- 18 nonius hanger
- 19 plaster board
- 20 water-repellent plasterboard
- 21 moist coating
- 22 tile glue (apply horizontally)
- 23 silicone paste
- 24 wall tile/floor tile
- 25 pine lath
- 26 Meranti/ MDF boarding
- 27 mounting wedge
- 28 coconut felt
- 29 wire shaft
- 30 artificial fibre profile
- 31 front view
- 32 flax
- 33 cardboard
- 34 I-section
- 35 phenolic foam
- 36 mineral wool with glass fibre
- 37 post
- 38 PU kit
- 39 wire cavity
- 40 multiplex
- 41 PVC top layer
- 42 ventilation
- 43 extruded polystyrene
- 44 clips
- 45 sound damping attachment
- 46 chipboard
- 47 HPL plate
- 48 cover profile
- 49 steel suspension bracket
- 50 steel edge profile
- 51 connection rail

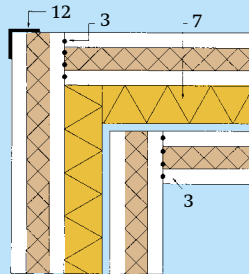
IW100



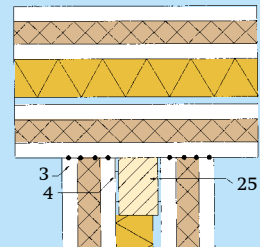
4.8.1. Wall connection



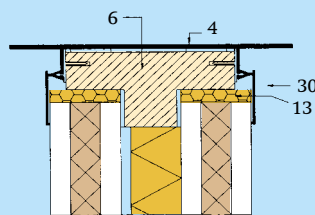
4.8.2. Casing connection



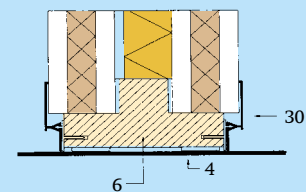
4.8.3. Corner joint



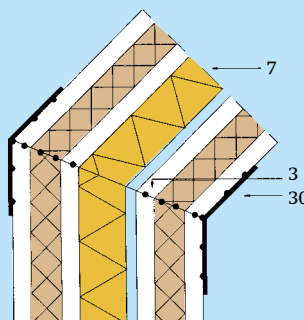
4.8.4. Wall connection



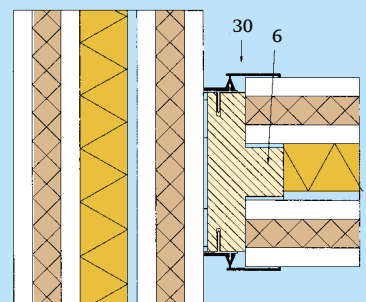
4.8.5. Ceiling connection deluxe



4.8.6. Floor connection deluxe



4.8.7. Corner joint deluxe



4.8.8. Connection deluxe

A treat for the eye

As indicated in the introductory text, the FAAY factory can provide the walls with a vinyl layer (on one or both sides). This vinyl is available in various designs and qualities.

In combination with the deluxe skirting board system, the room will be perfect! We shall be pleased to send you a sample of our vinyl collection at your request.



The IW135 is a 'thumping good wall' with versatile applications, thanks to its great stability and sound-insulating effect.

Insulation wall IW135

IW135

The IW135 consists of two VP35 elements that can be coupled to each other with a steel I- or TT-section. The cavity of 65 mm can be filled with mineral wool. This wall offers an excellent solution for rooms where high demands are set to sound insulation, fire resistance and stability.

Stability

With the steel I- or TT-section, a thumping good wall can be realized of up to a free height of approx. 6.30 m., in which the panels are stacked in half brick bond. Only over 6.30 m. height must this wall be braced. Therefore, this wall type is especially applicable in factory halls, offices, hospitals, laboratories, and such.

High sound insulation

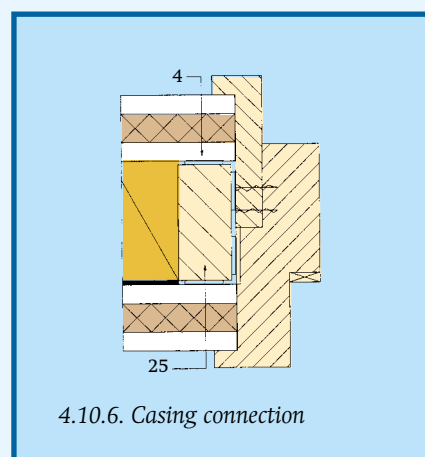
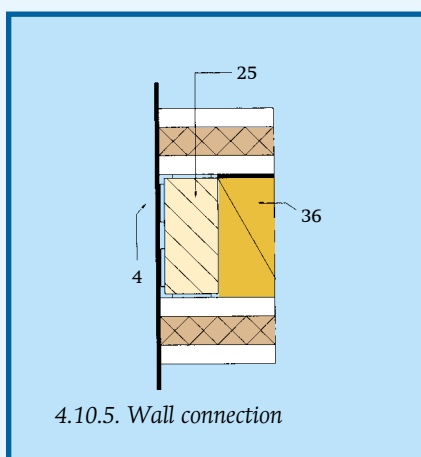
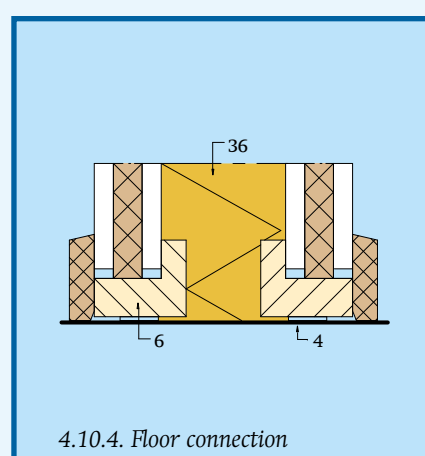
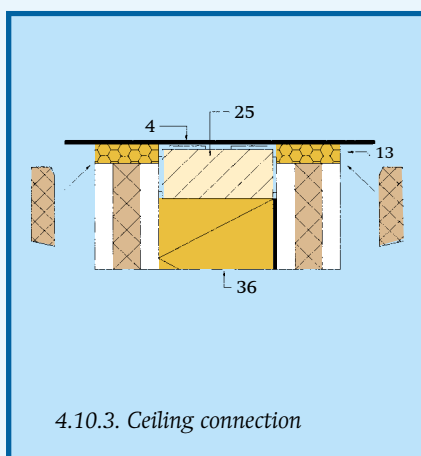
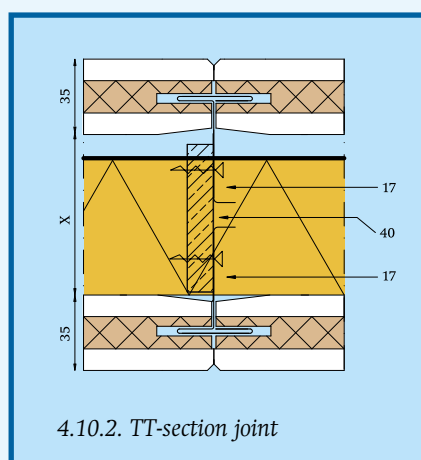
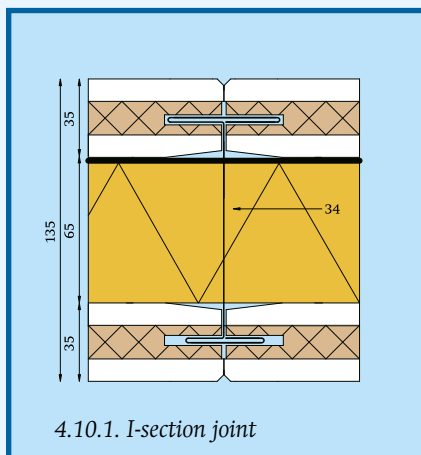
As the greater cavity is entirely filled with mineral wool, this also reaches a higher level of sound insulation. Contrary to brickwork systems, the IW walls are very light, which renders a weighted foundation superfluous. This decreases the total costs. Even with these light FAAY walls we can meet the high demands made to sound insulation and fire resistance. The IW135 is nail- and screw-proof, which renders special provisions for suspending heavy objects superfluous. The IW135 is extremely suitable for business separation. For more information about the load-bearing capacity of the wall in your building height you can contact Faay.



Detail coding

- 1 possibly glue with FAAYFIX® and fill and finish off with FAAY FILL & FINISH
- 2 wall socket
- 3 FAAYFIX® glue
- 4 foam band
- 5 vapour inhibitory layer
- 6 pine sole piece
- 7 mineral wool
- 8 chipboard tongue
- 9 half wooden tongue
- 10 watertight band
- 11 plastic U-section
- 12 corner bead
- 13 Pur foam
- 14 edge lath
- 15 block
- 16 I-beam
- 17 T-section
- 18 nonius hanger
- 19 plaster board
- 20 water-repellent plasterboard
- 21 moist coating
- 22 tile glue (apply horizontally)
- 23 silicone paste
- 24 wall tile/floor tile
- 25 pine lath
- 26 Meranti/ MDF boarding
- 27 mounting wedge
- 28 coconut felt
- 29 wire shaft
- 30 artificial fibre profile
- 31 front view
- 32 flax
- 33 cardboard
- 34 I-section
- 35 phenolic foam
- 36 mineral wool with glass fibre
- 37 post
- 38 PU kit
- 39 wire cavity
- 40 multiplex
- 41 PVC top layer
- 42 ventilation
- 43 extruded polystyrene
- 44 clips
- 45 sound damping attachment
- 46 chipboard
- 47 HPL plate
- 48 cover profile
- 49 steel suspension bracket
- 50 steel edge profile
- 51 connection rail

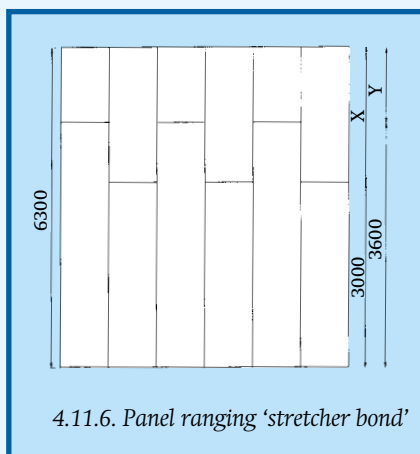
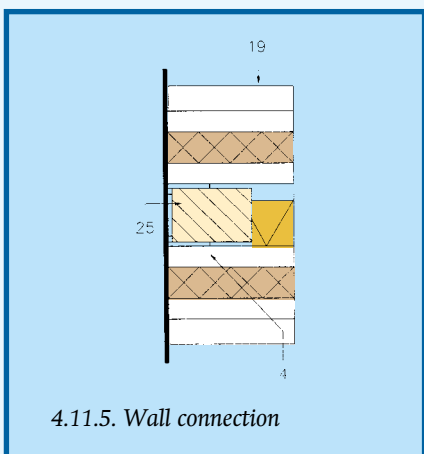
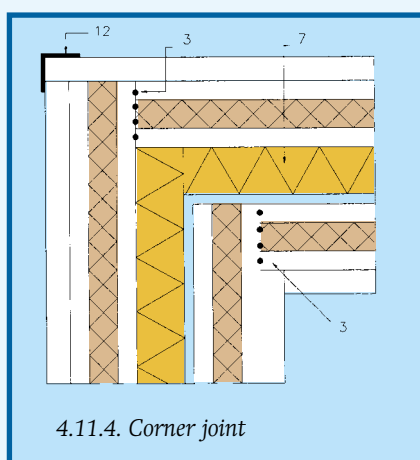
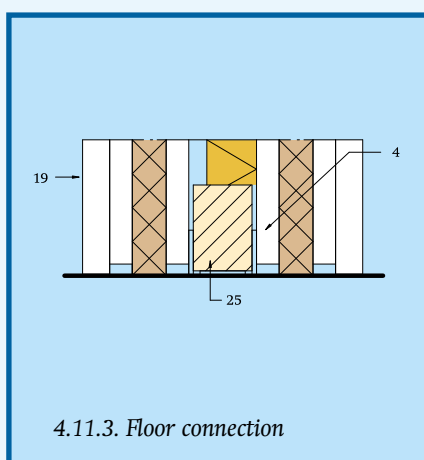
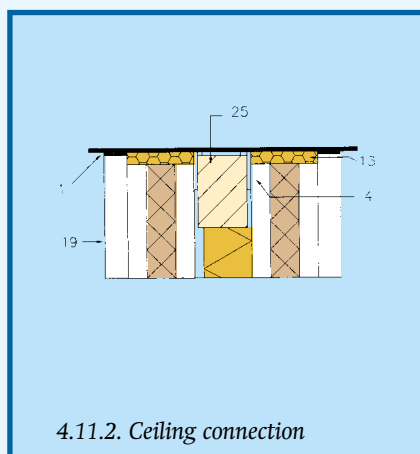
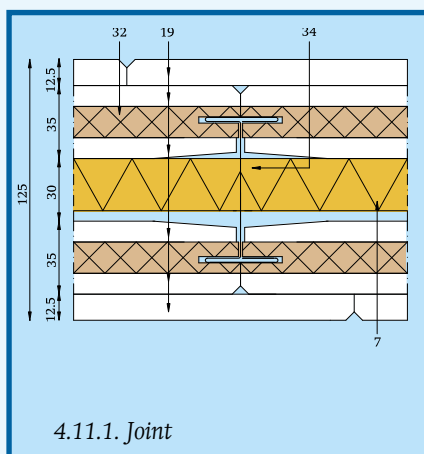
IW135



Technical details IW135

	2400, 2600, 2800, 3000, 3200, 3600 mm
Lengths	
	135 mm
Thickness	
	51,36 kg/m ²
Weight	
	> 75 min.
Fire resistance	
	2,17 m ² K/W
Rc	
	I _{luk, lab} NEN 5079 -6 dB
Sound insulation	R _w 49 dB
	KOMO attestation with certificate 20196/09

IW125



Technical details IW125



2400, 2600, 2800,
3000, 3200, 3600 mm

Lengths



125 mm

Thickness



65,35 kg/m²

Weight



90 min.

Fire resistance



1,19 m² K/W

Rc



$I_{luk, lab}$
NEN 5079 -5 dB

Sound insulation

Rw 51 dB



KOMO
attestation with
certificate 20196/09

As party wall in renovation projects, or when splitting up houses, apartments, hotel rooms, offices, laboratories, hospitals, etc. the IW148 and the IW200 feel entirely at home.

Party walls IW148 and IW200



Application of IW148 in an office.

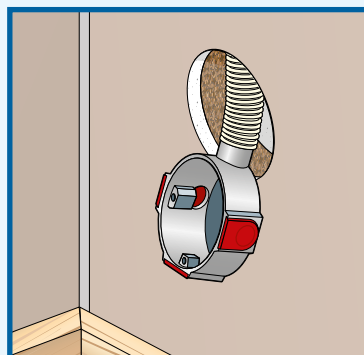
IW148

The IW148 is assembled on the building site out of two elements VP54 with a cavity of 40 mm. The cavity without cramp iron has to be completely filled with a mineral wool.

IW200

The IW200 is assembled on the building site from two elements VP70 with a cavity without cramp iron of 60 mm or from two elements VP54 with a cavity without cramp iron of 92 mm. The cavity has to be completely filled with a mineral wool. The two different types are coded as follows: IW200/70 and IW200/54.

The individual panels are standard provided with two pipe ducts for the benefit of building in electricity and/or data communication wiring.



Double sheeted system

As this is a two-scale system without cramp iron, the sheets stand alone and are not coupled to each other. In this manner contact noise is avoided and a high sound insulation remains guaranteed.

Fire-resistant & sound damping

The IW148 and IW200 have a very high fire resistance (at least 120 minutes). Also, the sound insulation is optimal.

Many standard sizes

Besides 6 standard lengths (from 2400 to 3600 mm) there are two different breadths: the 40 cm and 60 cm wide panels, in which the 40 cm panels are the standard.

Excellent features

Just like the other FAAY wall and ceiling systems, the insulation and party walls meet the demands of the Construction Resolution. Besides the fact that these two walls are literally house separating and usable in renovation projects, splitting up houses and apartments, many more other applications are possible. The IW148 and the IW200 are extremely suitable for spaces where absolute discretion is required. Examples are hotel rooms, offices, laboratories, hospitals, etc.

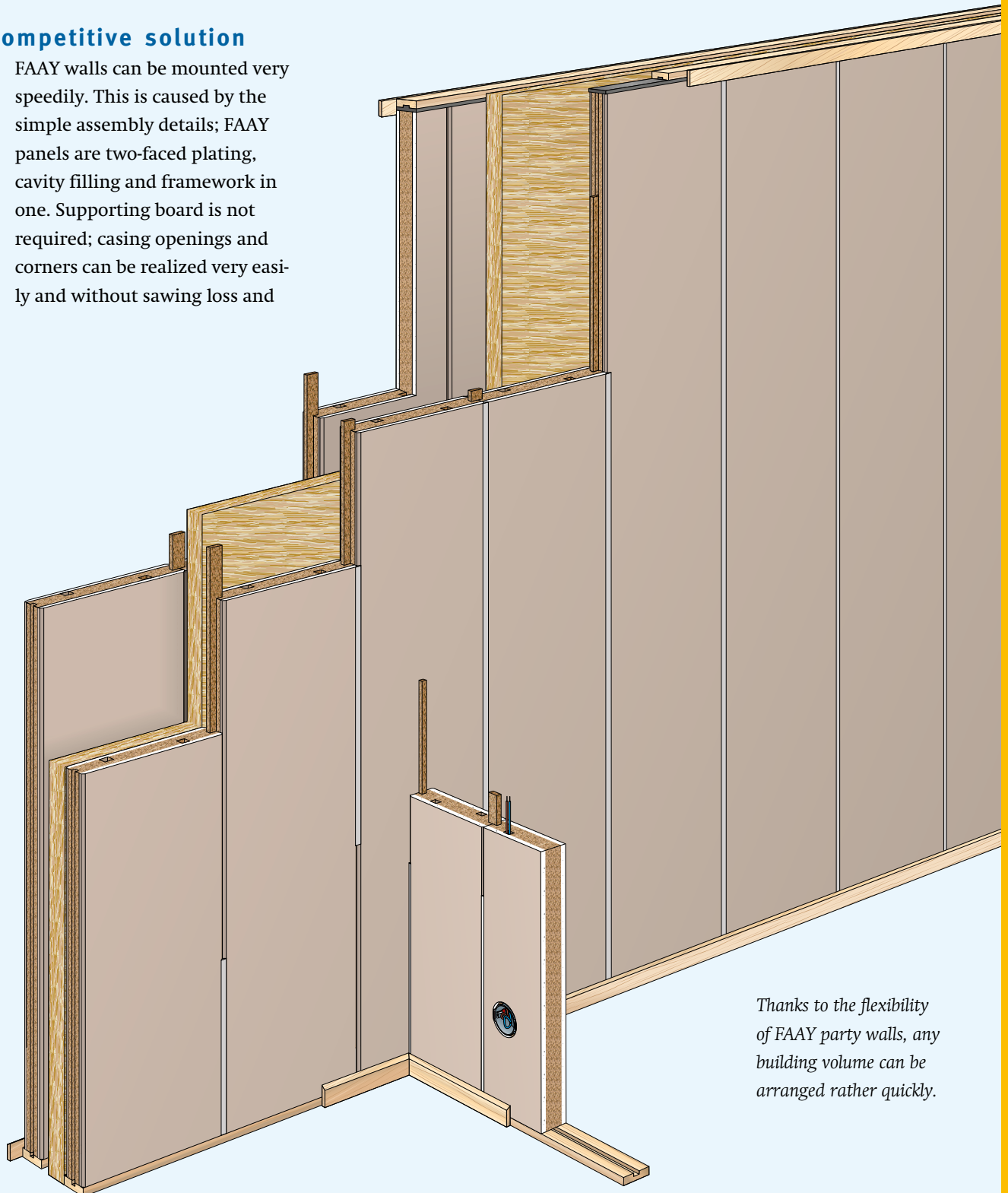


the seams can be smeared much faster. In this manner the costs of the completed wall (material and labour) are very competitive. The completion of the walls can therefore be realized considerably faster than traditional systems can. And like no one else, you know how you can use the gained time effectively.

Application of IW200 in office-environment.

Competitive solution

FAAY walls can be mounted very speedily. This is caused by the simple assembly details; FAAY panels are two-faced plating, cavity filling and framework in one. Supporting board is not required; casing openings and corners can be realized very easily and without sawing loss and

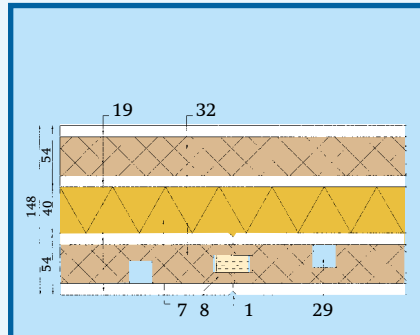


Thanks to the flexibility of FAAY party walls, any building volume can be arranged rather quickly.

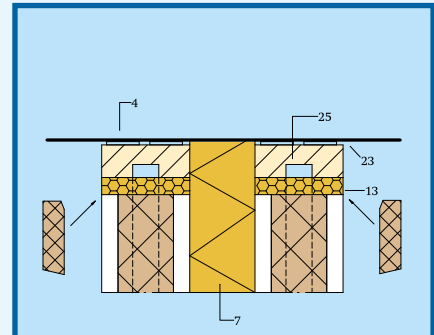
Detail coding

- 1 possibly glue with FAAYFIX® and fill and finish off with FAAY FILL & FINISH
- 2 wall socket
- 3 FAAYFIX® glue
- 4 foam band
- 5 vapour inhibitory layer
- 6 pine sole piece
- 7 mineral wool
- 8 chipboard tongue
- 9 half wooden tongue
- 10 watertight band
- 11 plastic U-section
- 12 corner bead
- 13 Pur foam
- 14 edge lath
- 15 block
- 16 I-beam
- 17 T-section
- 18 nonius hanger
- 19 plaster board
- 20 water-repellent plasterboard
- 21 moist coating
- 22 tile glue (apply horizontally)
- 23 silicone paste
- 24 wall tile/floor tile
- 25 pine lath
- 26 Meranti/ MDF boarding
- 27 mounting wedge
- 28 coconut felt
- 29 wire shaft
- 30 artificial fibre profile
- 31 front view
- 32 flax
- 33 cardboard
- 34 I-section
- 35 phenolic foam
- 36 mineral wool with glass fibre
- 37 post
- 38 PU kit
- 39 wire cavity
- 40 multiplex
- 41 PVC top layer
- 42 ventilation
- 43 extruded polystyrene
- 44 clips
- 45 sound damping attachment
- 46 chipboard
- 47 HPL plate
- 48 cover profile
- 49 steel suspension bracket
- 50 steel edge profile
- 51 connection rail

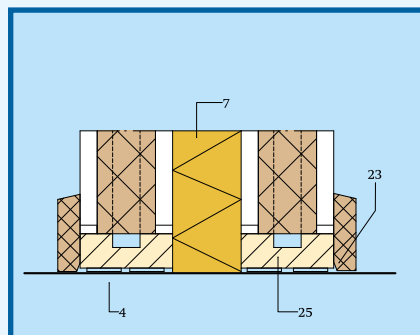
IW148



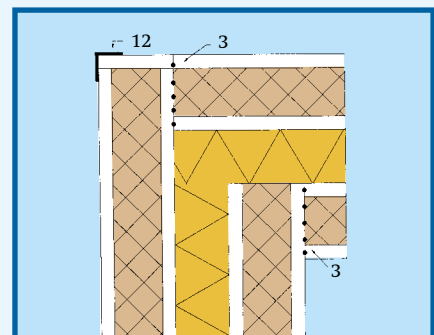
4.18.1. Joint



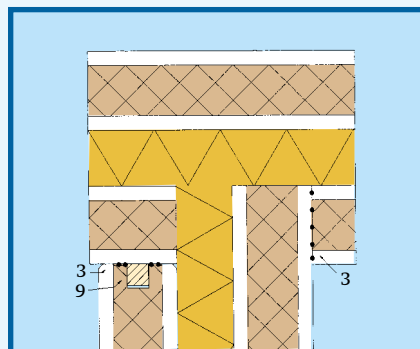
4.18.2. Ceiling connection



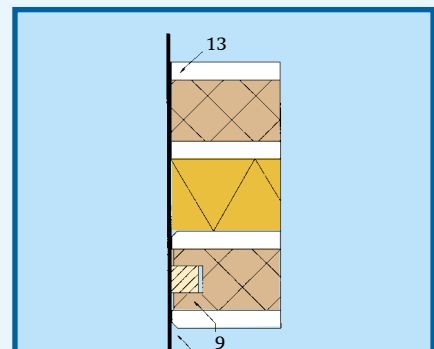
4.18.3. Floor connection



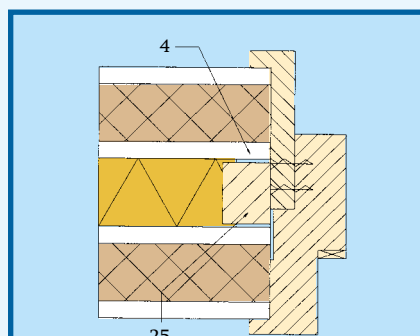
4.18.4. Corner joint



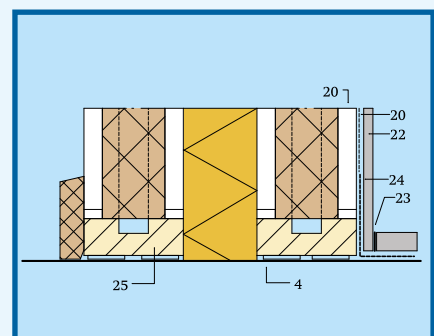
4.18.5. Connection



4.18.6. Wall connection



4.18.7. Casing connection



4.18.8. Floor connection sanitary core

IW200

Technical details IW148



2400, 2600, 2800,
3000, 3200, 3600 mm

Lengths



400/600 mm

Width



148 mm

Thickness



58,24 kg/m²

Weight



120 min.

Fire resistance



1,89 m² K/W

Rc



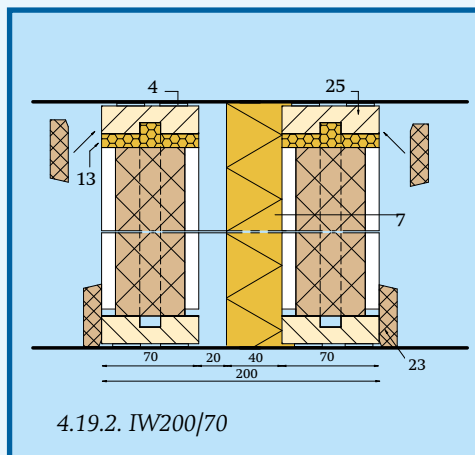
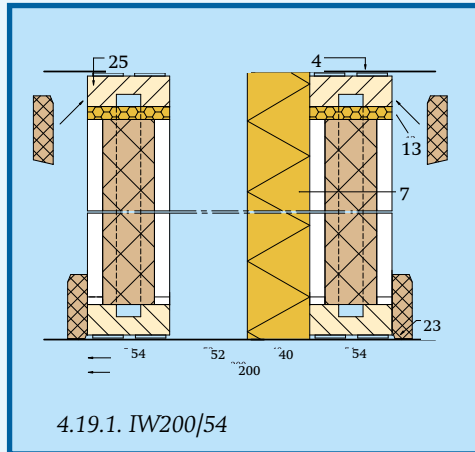
$I_{luk, lab}$ +3 dB
NEN 5079

Sound insulation

R_w 56 dB



KOMO
attestation with
certificate 20196/09



Technical details IW200/54 / IW200/70



2400, 2600, 2800,
3000, 3200, 3600 mm

Lengths



400/600 mm

Width



200 mm

Thickness



58,24 kg/m²
70,40 kg/m²

Weight



>120 min.

Fire resistance



2,07 m² K/W
2,39 m² K/W

Rc



$I_{luk, lab}$ +6 dB
NEN 5079

Sound insulation

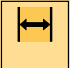


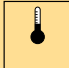

R_w ±59 dB



KOMO
attestation with
certificate 20196/09

Supply programme FAAY

wall and ceiling systems

Technical details	 Thickness	 Weight	 Fire resistance	 Rc	 Sound insulation	
					$I_{luk, lab}$ NEN 5079	R_w
VP54	54 mm	28,12 kg/m ²	45 min.	0,42 m ² K/W	-24 dB	30 dB
VP54 + 1x plaster	64 mm	36,12 kg/m ²	62 min.	0,45 m ² K/W	-18 dB	35 dB
VP54 + 2x plaster	73 mm	44,12 kg/m ²	>62 min.	0,49 m ² K/W	-17 dB	36 dB
SP54	54 mm	23,82 kg/m ²	≤20 min.	0,49 m ² K/W	-28 dB	27 dB
VP70	70 mm	34,20 kg/m ²	45 min.	0,58 m ² K/W	-24 dB	29 dB
SP70	70 mm	32,00 kg/m ²	45 min.	0,60 m ² K/W	-24 dB	29 dB
IW90	90 mm	36,80 kg/m ²	82 min.	1,25 m ² K/W	-6 dB	50 dB
IW100	100 mm	47,36 kg/m ²	75 min.	1,09 m ² K/W	-8 dB	45 dB
IW100 + 1x plaster	110 mm	55,36 kg/m ²	>90 min.	1,13 m ² K/W	-4 dB	49 dB
IW135	135 mm	51,36 kg/m ²	>75 min.	2,17 m ² K/W	-6 dB	49 dB
IW148	148 mm	58,24 kg/m ²	120 min.	1,89 m ² K/W	+3 dB	56 dB
IW200/54 (2x VP54)	200 mm	58,24 kg/m ²	>120 min.	2,07 m ² K/W	+6 dB	±59 dB
IW200/70 (2x VP70)	200 mm	70,40 kg/m ²	>120 min.	2,39 m ² K/W	+6 dB	±59 dB
GP22	22 mm	15,40 kg/m ²	>30 min.	1,38 m ² K/W ^{a)}	Improvement ca. 10-20 dB	
VP35	35 mm	23,18 kg/m ²	45 min.	1,49 m ² K/W ^{a)}	Improvement ca. 10-20 dB	
PG60	60 mm	9,10 kg/m ²	<20 min.	2,65 m ² K/W ^{b)}	n.a.	n.a.
PG70	70 mm	9,40 kg/m ²	<20 min.	3,05 m ² K/W ^{b)}	n.a.	n.a.
GP22 VO ceiling	22 mm	18,00 kg/m ²	>75 min. ^{c)}	1,96 m ² K/W ^{e)}	+3 dB ^{c)}	55 dB ^{c)}
FR19 VO ceiling	19 mm	8,00 kg/m ²	>70 min. ^{c)}	1,98 m ² K/W ^{e)}	+3 dB ^{d)}	55 dB ^{d)}

Formaldehyde: class E1

a) R-value element inclusive 40 mm insulation en one-brick wall
b) Rc - retention wall + 20 mm air cavity and one-brick wall
c) inclusive mineral wool under wooden floor
d) inclusive mineral wool under rocky ground
e) inclusive 65 mm mineral wool

All our tests have been carried out in accordance with the Dutch NEN standards.

Table date June 2009

Extensive showroom

In our showroom all the systems and products are arranged in many variations. Each type of wall and ceiling is presented in a surveyable manner. You are quite welcome, also together with your client.

Useful workshops

FAAY regularly organizes workshops where the tricks of the assembly trade are taught to you. Still more gain of time and ease of assembly are the

result. The maximum number of participants per workshop is 10 persons, so that everybody can be trained personally.

Modern AV-room

In the spacious audio-visual presentation room all the technical aids are available to give advanced presentations in any form.

Documentation

Besides the brochure about retention walls there is documentation available about:

- Wall and ceiling systems in general
- Partitions
- KBL-system
- Retention walls
- Ceiling systems
- Frames
- Prefab cavity barrier
- FAAY FILL & FINISH
- FAAYFIX® assembly glue
- FAAYFOAM® adhesive foam
- Assembly instruction
- Wall spraying.

This documentation will be sent to you at your request or can be downloaded from our website.

